

Welcome to the winter/spring 2024 season of Temple Israel Lifelong Learning Institute (TILLI).



With the wonders of zoom this winter, we again are able to visit two museums. We will also dip deep into the marvels and worries that Artificial Intelligence brings to our lives with two knowledgeable speakers and a video. Please read *The Confidante, The Untold Story of the Woman Who Helped Win WWI* for an in depth discussion on March 7. We will be joined by the author Christopher Gorham.

This spring, come join us for our Spring 2024 season starting on Thursday, April 4, 2024! We will offer eight interesting study groups on a wide variety of topics. All Study Groups will be held in person (Onsite). A limited number will be available on Zoom (Onsite and Online). Also, every week during lunch, we will hear an interesting speaker at our Lunch and Learn (Onsite and Online).

Registration is only online at TILLI.org. Some study groups are limited by size so please add your second choice so we can ensure you will have a place in a study group. Cost for the study groups (\$75 for temple members and \$100 for non temple members) can be made either by credit card online when registering or via check mailed to Temple Israel (477 Longwood Ave, Boston, MA 02215). The fee includes a continental breakfast and lunch.

TILLI is a peer-led community, please join us on any level of participation: as a Study Group Leader (coaching available), as a valuable committee member, and always as a valued participant.

Also honor and remember TILLI participants by donating to the Gale Raphael TILLI Fund which supports the important work of TILLI.

Looking forward to seeing you all soon.

Barbara Koff and Priscilla Golding

TILLI Co-Chairs

TILLI SPRING 2024 SCHEDULE

THURSDAYS: April 4, 11, 18, 25, May 2, 9

11:00 a.m. - 12:30 p.m.

Morning Study Groups

12:30 p.m. - 1:45 p.m.

Lunch and Learn Program

2:00 p.m. - 3:30 p.m.

Afternoon Study Groups

MORNING STUDY GROUPS

11:00 a.m. - 12:30 p.m.

The 1960's: The Full Story - *Michael Altman* (**ONSITE ONLY**)

Protecting Our Democracy in 2024 - *Ruth Klepper, coordinator, with Joanne Tuck, Deborah Seidel, Larry Koff, Andrew Steinberg* (**ONSITE ONLY**)

The Cell: The Basis of Life - *Barbara Koff* (**ONSITE and ONLINE**)

Apeirogon (a polygon of infinite yet countable sides) - *Helen Kolsky* (**ONSITE ONLY**)

AFTERNOON STUDY GROUPS

2:00 p.m. - 3:30 p.m.

Jewish Radical Feminism - *Joyce Antler* (**ONSITE and ONLINE**)

What Is Happening in Israel? - *Ted Greenwood* (**ONSITE and ONLINE**)

The Play's the Thing! - *Lenore Miller, Beth Sands, Sandy Wixted* (**ONSITE ONLY**)

Jewish Stories from All Over the World - *Natalie Schatz* (**ONSITE ONLY**)

Register at TILLI.org Deadline: March 29th

If you have any questions regarding TILLI, please contact Ann Abrams
at TILLI@tisrael.org, 617-566-3960.

Temple Israel's Lifelong Learning Institute (TILLI) provides opportunities for Temple members and others to engage in peer-led, intellectually stimulating study groups covering a broad range of topics, to enjoy cultural events together, and to develop social relationships and a community.

Morning Study Groups

► The 1960s: The Full Story

Michael Altman (altman1@comcast.net)

“The SGL’s* knowledge of the figures in history about whom we read and watched. His choice of readings were excellent, and we laughed, all had a chance to participate and were included. It was a marvelous class and I’m sorry it is over.”

— TILLI Participant

We all lived through the 1960s. In *The Shattering*, Kevin Boyle helps us remember what we experienced, pulling the decade together, and offering new insights and perspectives. The book portrays the struggles to advance civil rights legislation and interweaves what was happening in Vietnam.

While the course will focus on details leading up to vital decisions by leaders, 1960s culture will be an important part of the discussion including some 1960s music and videos of major events. We will read, discuss, share experiences, and compare the 1960s to the present. **Class is limited to 20.**

Reading: *The Shattering: America in the 1960s* by Kevin Boyle (W.W. Norton, 2021)



Above: Studio Without Walls, Summer 2023

*SGL=“Study Group Leader” throughout brochure

Morning Study Groups

► Protecting Our Democracy in 2024

*Ruth Klepper, coordinator (ruthklepper@icloud.com),
with Larry Koff, Deborah Seidel, Andrew Steinberg, Joanne Tuck*

This TILLI class will be an opportunity to examine some of the issues paramount to voters in the 2024 national election. Each session will be led by a member of the team and will focus on elements of support and opposition to issues: the political dangers in the presidential race, the energizing effect of abortion bans, the domestic crisis in housing and infrastructure, the Christian nationalism movement, the inability of Congress to govern. Members of the class are encouraged to present various points of view during the discussion. We hope to make some projections of the outcome of the November election. **Class is limited to 16.**

Reading: Articles, news clips, and related material will be distributed in advance. Assume about 2 hours of reading each week. Students are encouraged to bring in various articles for the class.

The Cell: The Basis of Life

Barbara Koff (barbara.smith.koff@gmail.com)

► All living organisms are made of cells, the basic unit of life. These remarkably varied self-replicating units can protect us from disease, move in concert, communicate with each other, and metabolize our foods to provide energy essential to the human body.

Malfunction of their components results in disease. This course will explore the history of cell research, key structural and functional components of cells, as well as the biochemical mechanisms of their life-promoting activities. The mechanistic bases of normal and aberrant cell function in health and disease will be important aspects of slides, and discussions. Estimated outside work is three hours per week.

“Very organized and well planned.
Material was appropriate for the audience of primarily non scientists.
Excellent balance between presenting the information and allowing dialogue.”

— TILLI Participant

Reading: *The Song of the Cell: An Exploration of Medicine and the New Human* by Siddhartha Mukherjee (Scribner, 2022).

See Study Group Leader biographies on pages 11-12.

Morning Study Groups

► **Apeirogon (a polygon of infinite yet countable sides)**

Helen Kolsky (helen.kolsky@gmail.com)

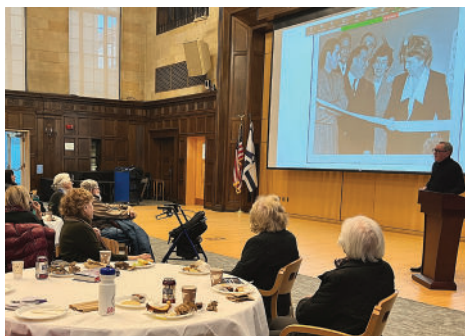
Jewish Rami and Palestinian Bassam, the protagonists of the story (and actual people) become brothers through their shared and terrible suffering. Their story is the center of a novel which explores humanity across history, weaving together 1001 tales of peace, cruelty, love, loss, and reconciliation. This study group will consider both the methods and the content of *Apeirogon* in order to appreciate the structure of this extraordinary work and its vision of possible paths to peace. The title points to the hugely complex yet perhaps not impossible nature of the issues. Guided and informed discussion is my preferred method for studying literature. Two hours of preparation.

Class is limited to 18.

Reading: *Apeirogon* by Colum McCann, (Random House, 2021), available in paperback.

“Leader was very engaged and knowledgeable,
there was a goal of having fun as well as learning,
course materials were perfect.”

— TILLI Participant



Above: Scenes from TILLI Fall Semester, 2023

Afternoon Study Groups

► Jewish Radical Feminism: A Short History of Challenges and Achievements

Joyce Antler (antler@brandeis.edu)

This lecture/discussion course examines the context, opportunities, and achievements of Jewish radical feminists from the early nineteenth century through the contemporary period. It will include Jewish women's involvement in the labor movement, socialism, communism, Zionism, the peace and birth control movements, liberal feminism, radical feminism, and Jewish radical feminism. Readings of both primary and secondary sources are assigned for each session. **Class limited to 20.**

"The subject matter was new and unfamiliar to me so I learned a lot. The SGL was very organized and knowledgeable, and the class discussion was lively and engaged."

— TILLI Participant

Reading: Joyce Antler, *Jewish Radical Feminism: Voices from the Women's Liberation Movement*, NYU Press (paperback) 2019.

► What is Happening in Israel?

Ted Greenwood (tedgreenwood@msn.com)

This study group will be a weekly conversation about what is happening in Israel and its immediate neighborhood as well as in the larger Middle East as it affects Israel. Participants will be expected to subscribe to and read daily (about 20 minutes per day) the Israel and Middle East News Update emailed by the S. Daniel Abraham Center for Middle East Peace five days a week. The SGL will also from time to time distribute other short news articles of interest and will provide relevant background and context about Israel's history and politics. **Class limited to 20.**

Reading: Israel and Middle East News Update emailed by the S. Daniel Abraham Center for Middle East Peace five days a week.

"SGL was truly knowledgeable in his subject, facilitated /encouraged discussion of varying interpretations, had excellent a-v materials, related comfortably with everyone."

— TILLI Participant

Afternoon Study Groups

► The Play's the Thing!

Lenore Miller (ldmiller@successfulspeech.com),

Beth Sands ([easands@comcast.net](mailto: easands@comcast.net)), Sandy Wixted (sandra.wixted@gmail.com)

Become one of the growing cadre of budding TILLI thespians as we continue reading aloud plays presenting the African-American experience in the 20th and 21st centuries. The first of our readings will be, *Jitney*, by August Wilson, one of the ten plays from his Century Cycle. Our second play will be *A Raisin in the Sun* by Lorraine Hansberry, the first African-American female author to have a play performed on Broadway. During the semester, we will read the whole play, with each class member taking a character. Discussion will focus on themes, character development, and language along with the historical, social, political, economic, mythic, and spiritual contexts. Prior reading of assigned acts and scenes will average an hour and a half each week.

"Reading the plays together out loud deepened my understanding of their meaning and appreciation of their art. The discussions were interesting as was the SGLs guidance."

— TILLI Participant

Reading: *Jitney*, by August Wilson, Acting Edition. Order online through the concordtheatricals.com website; use the search bar. The cost is \$10.95 plus tax and shipping. For *A Raisin in the Sun*, Lorraine Hansberry, Vintage Books. Cost online is \$8.99 plus tax and shipping. Please purchase from this site so we all have the same edition of each play.



Above: Scenes from TILLI Fall Semester, 2023

Afternoon Study Groups

► Jewish Stories from All Over the World

Natalie Schatz (schatz.natalie@gmail.com)

This study group will be based on an anthology of contemporary Jewish stories from all over the world that reveal the richness, vitality, and immense variety of Jewish life. For example, we will read and discuss stories by authors from Central and Eastern Europe who until recently were unknown in the West. In Latin America, there has been an outpouring of Jewish writing which parallels the recent popularity of non-Jewish Latin American writing. We will also be reading stories from other diasporas such as Ethiopia, Iraq, and Syria. **Class limited to 15.**

"The SGL led us into the deepest part of ourselves with honesty and sincerity. She gave us the opportunity to write about what is most difficult to express—our feelings and memories."

— TILLI Participant

Reading: *Here I Am: Contemporary Jewish Stories From Around the World*. Edited by Berman and Starkman (Jewish Publication Society, 1998)

"The SGL followed his course description perfectly, chose good poems by good poets, made many helpful comments himself and allowed easy and ample discussion."

— TILLI Participant



Above: Scenes from TILLI Fall Semester, 2023

Need help obtaining a physical or e-book for your study group, to borrow or buy? Please contact Ann Abrams, who still wears the TI Librarian hat! (aabrams@tisrael.org)

UPCOMING TILLI

■ The Band's Visit - **Dec 10**
(2:30 p.m.)

■ Chanukah Party - **Dec 14**
(11:00 a.m.)

DECEMBER 2023

S	M	T	W	Th	F	S
					1	2
3	4	5	6	7	8	9
10	11	12	13	14	15	16
17	18	19	20	21	22	23
24 31	25	26	27	28	29	30

■ "I'll Have What She's Having" - **Jan 11**
(11:00 a.m.)

■ The AI Revolution - **Jan 18**
(11:00 a.m.)

■ Aaron Pressman, AI Speaker - **Jan 25**
(11:00 a.m.)

JANUARY 2024

S	M	T	W	Th	F	S
	1	2	3	4	5	6
7	8	9	10	11	12	13
14	15	16	17	18	19	20
21	22	23	24	25	26	27
28	29	30	31			

■ Dalí 101- **Feb 8** (11:00 a.m.)

■ Henry Lieberman, AI Speaker - **Feb 15**
(11:00 a.m.)

FEBRUARY 2024

S	M	T	W	Th	F	S
				1	2	3
4	5	6	7	8	9	10
11	12	13	14	15	16	17
18	19	20	21	22	23	24
25	26	27	28	29		




**See pages 13-15 for
Winter Programming info.**

PROGRAMS *at a glance*

MARCH 2024


S	M	T	W	Th	F	S
					1	2
3	4	5	6	7	8	9
10	11	12	13	14	15	16
17	18	19	20	21	22	23
24 31	25	26	27	28	29	30

 **The Confidante Book Discussion - Mar 7 (11:00 a.m.)**

 **TILLI Spring Semester Registration Deadline - Mar 29**

APRIL 2024


S	M	T	W	Th	F	S
	1	2	3	4	5	6
7	8	9	10	11	12	13
14	15	16	17	18	19	20
21	22	23	24	25	26	27
28	29	30				


 **Spring Semester Study Group Sessions/Lunch & Learn Apr 4, 11, 18 & 25**


**Morning Study Groups: 11:00 a.m.
Afternoon Study Groups: 2:00 p.m.
Lunch and Learn: 1:00 p.m.**

MAY 2024

S	M	T	W	Th	F	S
			1	2	3	4
5	6	7	8	9	10	11
12	13	14	15	16	17	18
19	20	21	22	23	24	25
26	27	28	29	30	31	

 **Spring Semester Study Group Sessions/Lunch & Learn May 2 & 9**

 **Yiddish Center Amherst, MA Trip - May 5 (tentative)**

 **Toni Stone at Huntington Theater - May 26 (tentative)**

Join us for

LUNCH AND LEARN

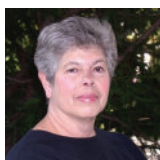
Thursday Afternoons, 1:00 - 1:45 p.m.

More info on page 17.

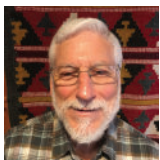
Study Group Leaders



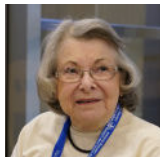
Michael Altman (*The 1960s: The Full Story*) is a retired law professor and trial lawyer. He taught civil rights and criminal law classes for many years and litigated many civil rights cases in Boston including in 1967 – 1972.



Joyce Antler (*Jewish Radical Feminism*) is the Samuel J. Lane Professor Emerita of American Jewish History and Culture and Women's, Gender, and Sexuality Studies at Brandeis University. She is the author of many books on women's and Jewish history.



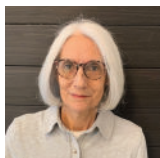
Ted Greenwood (*What is Happening in Israel?*) has followed Israeli and Middle East politics and security issues for many years as a political scientist and as a matter of personal interest. He has led TILLI study groups on Israeli film, Palestinian Perspectives (with Helen Kolsky), and science and technology topics.



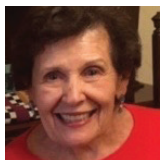
Ruth Klepper, Larry Koff, Deborah Seidel, Andrew Steinberg, Joanne Tuck (*Protecting Our Democracy in 2024*)



Ruth Klepper was a Planned Parenthood executive director, a lobbyist, and led TILLI study groups on politics, and philosophy.



Larry Koff has more than 40 years of experience in urban planning and public facilitation. He has led TILLI classes on Planning, Housing, and Transportation. **Deborah Seidel** is a law school graduate and has more than 40 years of experience as a professional in the non-profit social welfare sector.



Andrew Steinberg is an organizer for the Jewish Alliance for Law and Social Action (JALSA). Since the Dobbs decision, he has led JALSA's advocacy program to protect and expand reproductive rights. **Joanne Tuck** has taught Social Movements at Wentworth Institute of Technology and Holocaust and Human Behavior at Facing History and Ourselves. She has led several TILLI classes.



Barbara Koff (*The Cell: The Basis of Life*), an Emeritus Professor of Biochemistry at Boston University School of Medicine, taught medical and graduate students in cell and molecular biology. Now in retirement, she enjoys teaching science to laypeople. She has taught several courses at TILLI.

Study Group Leaders



Helen Kolsky (*Apeirogon*) received a B.A. in English and American Literature from Brandeis University and an M.A. in Communications from The New School University. She taught English at the secondary and college level. This is her third TILLI study group to focus on Palestinian voices.



Lenore Miller, Beth Sands, Sandy Wixted (*The Play's the Thing!*)

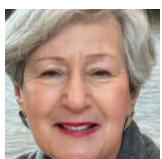
The facilitators have a love of theater along with acting experience and recent play-reading with their TILLI peers.



Lenore Miller, as a speech-language pathologist, worked on educational/social issues relating to Black language.



Beth Sands was a theater minor and **Sandy Wixted** an English major. All regularly frequent Boston's theaters, including the expanding productions by Black artists.



Natalie Schatz (*Jewish Stories from All Over the World*) Natalie spent many years as an academic librarian and has taught in Library School. She has a lifelong love of literature. At TILLI she has led study groups on Israeli literature and Italian writers.

PLEASE REGISTER ONLINE
AT TILLI.org

REGISTER BY MARCH 29, 2024

TILLI WINTER SESSION 2023-24

With the exception of *The Band's Visit*, all events are free
and are from 11:00 a.m. – 12:30 p.m.
Register at TILLI.org or email TILLI@tisrael.org to receive a link.

Theater Party:

The Band's Visit, a musical

Sunday, December 10, 2:30 p.m.

(ONSITE at the Huntington Theater)

The eight men of the Alexandria Ceremonial Police Orchestra arrive in Israel from Egypt. They have been booked by an Arab cultural center in Petah Tikva, but through a miscommunication (Arabic has no “p” sound, and regularly replaces it with “b”), the band takes a bus to Beit Hatikva, a fictional town in the middle of the Negev Desert. The Egyptians encounter a few Israeli townspeople, who respond with curiosity about the band, are variously friendly and wary, and provide them with shelter, food, music and companionship during their visit.



Chanukah Party

Thursday, December 14, 11:00 a.m.

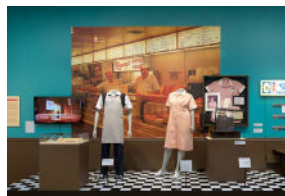
(ONLINE and ONSITE AT TI)

Come one and all to TILLI Chanukah celebration. Join us in Levi Auditorium for TILLI's Chanukah Party. We will celebrate Chanukah with singing and a Chanukah brunch.

"I'll Have What She's Having" Illinois Holocaust Museum

Thursday, January 11, 11:00 a.m. (ONLINE ONLY)

More than a place to get a meal, the Jewish deli is a community forged in food. "I'll Have What She's Having": The Jewish Deli explores how Jewish immigrants, mostly from Central and Eastern Europe, imported and adapted traditions to create a uniquely American restaurant. The exhibition reveals how Jewish delicatessens became a cornerstone of American food culture, and how delis served as a lifeline for many Holocaust Survivors and refugees who came to the United States. Get a taste of deli history through neon signs, menus, advertisements, uniforms, photographs, and film and TV clips.



TILLI WINTER SESSION 2023-24

The AI revolution: Google's Developers on the Future of Artificial Intelligence - 60 Minutes

Thursday, January 18, 11:00 a.m.

(ONLINE ONLY)

Competitive pressure among tech giants is propelling society into the future of Artificial Intelligence, ready or not. Scott Pelley dives into the world of AI with Google CEO Sundar Pichai.



"Artificial Intelligence This Time Around, Savior or Villain?"

Aaron Pressman, AI speaker, *Boston Globe*

Thursday, January 25, 11:00 a.m.

(ONLINE and ONSITE AT TI)

ChatGPT, DALLÉ, and a host of other new AI-powered apps can impressively mimic human creativity in writing and

drawing, reaching a new pinnacle after 70 years of AI development. But they also make a lot of seemingly obvious and often times weird mistakes (melting eggs? Google it). How do they work, how can they be improved, and should we be more worried or excited about their emergence?

"Dalí 101: From Melting Watches to Nuclear Crucifixions"

Dalí Museum Collection, St. Petersburg, Florida

Thursday, February 8, 11:00 a.m. (ONLINE ONLY)

In this talk, Peter Tush, Dalí Museum Curator of Education, explores the fascinating, outrageous life and art of Salvador Dalí, focusing on work in The Dalí Museum Collection, St. Petersburg, Florida. The talk traces Dalí's development from his rural beginnings to becoming an outspoken student to conquering the art world as a member of the surrealist group, only to reinvent himself as a "nuclear mystical" artist following World War II. The talk will feature stories from Dalí's remarkable life, his world of dreams, and his mind-bending illusions.



TILLI WINTER SESSION 2023-24

“Artificial Intelligence: The End of Civilization or the Beginning of Civilization?” Henry Lieberman, Research Scientist MIT Computer Science and Artificial Intelligence Laboratory (CSAIL)

Thursday, February 15, 11:00 a.m. (ONLINE and ONSITE AT TI)



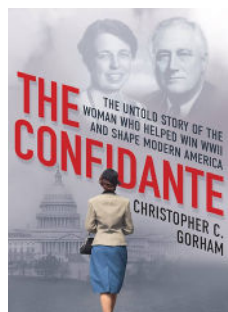
Popular press articles whipsaw the public between two starkly different views of Artificial Intelligence. On one hand, AI is presented as a magic genie that can solve all of our problems with superhuman intelligence. On the other hand, it's presented as an unprecedented threat to humanity, with the danger of loss of jobs, loss of privacy, automated discrimination, even the end of humanity in some kind of “robot rebellion”. No wonder the public is confused. Which is it? The aim of this talk and discussion is to present a third view. The biggest value of AI will lie, not in improving the operations of today's industry and government, but in making it possible to have a more cooperative, less competitive world.

International Women's Day Book Discussion: *The Confidante, The Untold Story of the Woman Who Helped Win WWII and Shape Modern America*

Thursday, March 7, 11:00 a.m.

(ONLINE and ONSITE AT TI)

More than the story of one remarkable woman, *The Confidante* explores who gets to be at the forefront of history, and why. Though she was not quite a hidden figure, Rosenberg's position as “the power behind,” combined with her status as an immigrant and a Jewish woman, served to diminish her importance. In this inspiring, impeccably researched, and revelatory book, Christopher C. Gorham at last affords Anna Rosenberg the recognition she so richly deserves.



“I appreciated the SGL's knowledge, passion for the material and sense of humor. I also appreciated his patience with the technology problems and the difficulties with a mixed presence class.”

— TILLI Participant

LUNCH AND LEARN PROGRAM

Join us!

Thursday Afternoons, 1:00 - 1:45 p.m.

RSVP: TILLI@tisrael.org for a ZOOM link

For more info about these speakers and their topics, please visit TILLI.org



APRIL 4

NICOLE MONAHAN
*Oh, the Places I've Been
with My Violin!*



APRIL 25

JOSHUA RUBENSTEIN
*The Last Days
of Stalin*



APRIL 11

ELLEN FISHMAN
*Holocaust
Survivors Today*



MAY 2

ANN BOOKMAN
*Blood Lines: A Poetry
Reading and Discussion*



APRIL 18

LISA DAVIS
*Passover Illuminated:
Handwritten Haggadot
in the Middle Ages*



MAY 9

CLOSING
LUNCH



Core Committee

Barbara Koff and Priscilla Golding, Co-Chairs

Archivist and Caring Community: Abby Greenberg, Chair

Budget, Data, Tech Assistance and Elections: Ted Greenwood, Chair

Curriculum: Natalie Schatz, Chair

Entertainment and Events: Susan Fliegall, Debi Gandre, Joan Loren, Co-Chairs

Special Events: Serena Fujita, Chair

Lunch and Learn: Bob McCorkle, Chair

Membership: Beth Sands and Mark Kaplan, Co-Chairs

Adult Education Liaison: Saralynn Busch, Chair

Summer and Winter Programming: Lenny Krulewich, John Freeman, Co-Chairs

Public Relations and Photography: Debra Mandel, Coordinator

Clergy Liaison: Rabbi Suzie Jacobson

Adult Education Team:

Emma Glaser and Ann Abrams

Brochure design: April Ropes



Temple
Israel
Lifelong
Learning
Institute

Non-Profit
Organization
US Postage
PAID
Permit No. 50648
Boston, MA