

TILLI

TEMPLE ISRAEL LIFELONG LEARNING INSTITUTE



Fall 2025

Learn with us online or onsite!

Welcome to TILLI: Temple Israel Lifelong Learning Institute – A Program of Temple Israel of Boston



Temple Israel of Boston is proud to present the Temple Israel Lifelong Learning Institute (TILLI), a vibrant, peer-led learning community for older adults. Rooted in Temple Israel's mission—**“Living Judaism together through discovery, dynamic spirituality, and righteous impact”**—TILLI embodies a commitment to community, lifelong exploration, and meaningful connection.

Who Can Join:

TILLI is open to all. We warmly welcome Temple Israel members, members of other synagogues, and those new to our community.

Member Pricing:

Temple Israel members receive discounted registration of \$120. In many cases, individuals who belong to other synagogues are also eligible for this member rate.

Non Member Pricing:

Participants who are not members of a synagogue pay a rate of \$150.

TILLI Summer/Fall 2025 Season:

Please join us for **summer 2025** events each month including a museum tour, theater, art on the Riverway, Tanglewood Sunday concert with Yo Yo Ma, and a Jewish tour of North End. Registration is online at [TILLI.org](https://tilli.org).

Fall 2025, we have eleven wonderful study groups led by our committed volunteer study group leaders. We will offer five study groups in the morning and six in the afternoon. A limited number will be available both onsite and online. We will continue to have class websites this fall to show assignments and interact with classmates. During lunch, we will hear from five fascinating speakers on a wide range of topics.

To cover the increasing cost to operate the TILLI program, our fees will be raised to \$120 for members of any temple and \$150 for non-temple members. As always your registration fee includes parking, lunch, and coffee/tea before the study groups. Scholarships are available on request. Please contact the TILLI staff for scholarships and/or other questions/support. (tilli@tisrael.org or call 617-566-3960)

Registration is online only at [TILLI.org](https://tilli.org), which accepts credit cards. You may make a check payable to Temple Israel and mail to **TILLI-Temple Israel**, 477 Longwood Ave, Boston, MA 02215. Please register before mailing in a check.

As we are a peer-led institute, we welcome your input and participation on any level. Consider leading a study group (coaching available), joining a committee, or helping us to recruit new study group leaders and participants.

You may also honor or recognize TILLI by donating to the Gale Raphael TILLI Fund which supports our important work.

Hope to see you soon,
Barbara Koff and Priscilla Golding
TILLI Co-Chairs

TILLI FALL 2025 SCHEDULE

THURSDAYS: Oct 23, 30, Nov 6, 13, 20, Dec 4

11:00 a.m. - 12:30 p.m.

1:00 p.m. - 1:45 p.m.

2:00 p.m. - 3:30 p.m.

Morning Study Groups

Lunch and Learn Program

Afternoon Study Groups

MORNING STUDY GROUPS

11:00 a.m. - 12:30 p.m.

The Many Worlds of Bob Dylan - *Cantor Jeff Klepper* (**ONSITE**)

It's the Economy, Stupid - *Larry Koff and Irwin Price* (**ONSITE** and **ONLINE**)

Rhymers from Frost to Dylan - *Bob McCorkle* (**ONSITE** and **ONLINE**)

The Writer's Eye - *Peggy Morrison* (**ONSITE**)

Out of Darkness. A Moral History of Germany: 1942-2022 - *Detlev Suderow* (**ONSITE**)

AFTERNOON STUDY GROUPS

2:00 p.m. - 3:30 p.m.

"JAMES," the retelling of Huckleberry Finn - *Robbie Apfel and Bennet Simon* (**ONSITE**)

The World of TILLI: History and Impact - *Saralynn Busch and Rhoads Wald* (**ONSITE**)

A History of Hungarian Jews - *George Deák* (**ONSITE** and **ONLINE**)

All History is Local History - *Ken Liss* (**ONSITE** and **ONLINE**)

Women in Astronomy: It's Not Only a Boy's Game* - *Linda Neumann* (**ONSITE**)

**last session will be November 24*

A View Into a Vanished World: Yiddish Short Stories - *Natalie Schatz* (**ONSITE**)

Register at TILLI.org Deadline: September 15th

If you have any questions regarding TILLI, please contact TILLI Staff
at TILLI@tisrael.org, 617-566-3960.

Temple Israel's Lifelong Learning Institute (TILLI) provides opportunities for Temple members and others to engage in peer-led, intellectually stimulating study groups covering a broad range of topics, to enjoy cultural events together, and to develop social relationships and a community.

Register at TILLI.ORG by September 15th

Morning Study Groups

► The Many Worlds of Bob Dylan

Cantor Jeff Klepper (jeff1326@me.com)

Bob Dylan is arguably the most important musical artist of our time. He is also one of the most enigmatic. Our course will delve into as many aspects of his life and career as we can manage in the time we have. We will learn about his history, listen and discuss his songs, read what critics have written about him, watch scenes from his movies, all in an attempt to better understand the man who has been described as “a planet to be explored.”

“I liked the way the SGL* guided the discussions and his knowledge.

I also liked the texts and class discussions”

— TILLI Participant

Readings: Any readings will be posted on Google Classroom.

► It’s the Economy, Stupid

Irwin Price (irwin.price@gmail.com) and Larry Koff (larry.koff@outlook.com)

Once again, James Carville’s advice is on the money (pun intended). This study group will look at some of the key measures of the economy: output, inflation, unemployment, and growth and their relevance to current economic issues. We will also explore the tradeoffs between some of the economy’s goals and specific needs like housing, transportation, energy, and health. Who makes the decisions and how might we get better decisions, the market or the government?

Reading: *Abundance* by Ezra Klein and Derek Thompson, published in 2025 (Amazon: Hardcover \$17.34). Additional economic chapters and articles about relevant current event topics in the news will be posted on Google Classroom.



Above: TILLI tours Hebrew College’s Silvana Mizrahi exhibit with docent Deborah Feinstein

*SGL=Study Group Leader

Morning Study Groups

► Rhymers from Frost to Dylan

Bob McCorkle (mccorkle49@yahoo.com)

Many 20th and 21st-century poets prefer free verse, but Robert Frost, May Sarton, Molly Peacock, and Rachel Hadas often work in traditional forms. We'll spend a class on each. The other two classes will be for songwriters Leonard Cohen and Bob Dylan. We'll view interviews and concert footage, but most of our time will be spent in discussion. We'll read, we'll listen, we'll talk. There will be a half-hour of reading to prepare for each class and videos to watch before the Cohen and Dylan classes. No, we couldn't book Dylan, but he has kindly made some recordings for us.

"I liked the selection of material covered, and the level at which the SGL covered the difficult material. I loved when the class members talked about their own experiences."

— TILLI Participant

Reading: All readings will be in PDF files posted on Google Classroom.

► The Writer's Eye

Peggy Morrison (prmorrisson@verizon.net)

"The SGL's knowledge of the subject matter was impressive. Her ability to frame questions that were key to thinking about and understanding the book and the film's relationship really stood out each session. The SGL's capture of the historical context in so many ways really gave a terrific background for the novel."

— TILLI Participant

Writers have long been fascinated by visual artists: the idea of artistic genius; the process of artistic expression; the relationship between portraits and their subjects; the inspirational role of muses; and the effects on artists of ambition, failure, and success. We will read and discuss short stories by great writers: E.A. Poe, Henry James, Doris Lessing, Bernard Malamud, and others to discover how they use one art form, narrative fiction, to reflect on painting, sculpture, and ceramics. Group members should expect two hours of reading in preparation for each session.

Reading: *Stories of Art and Artists*, *Everyman's Pocket Classics*, \$25 new on Amazon. Additional reading will be posted on Google Classroom.

Morning Study Groups

► Out of Darkness. A Moral History of Germany: 1942-2022

Detlev Suderow (dsuderow@comcast.net)

In 1945, Germany lay in ruins, morally and materially. Its citizens stood condemned by history, responsible for a horrifying genocide and war of extermination. But by the end of Angela Merkel's tenure as chancellor in 2021, Germany looked like the moral voice of Europe, welcoming more than one million refugees. How did a nation whose past has been marked by mass murder reinvent themselves, and how much? This journey is marked by a series of extraordinary moral conflicts: admissions of guilt and shame vying with immediate economic concerns; restitution for some but not others; tolerance versus racism; compassion versus complicity. This course will be held in a seminar style and participants will read material and actively engage in the discussion. The reading is approximately 100 pages/week.

Reading: There will be 2 books: *Out of Darkness. The Germans 1942-2022* by Frank Trentmann. Alfred Knopf 2024. (Amazon: Hardcover \$23.93) and *Revenge of the Tipping Point* by Malcolm Gladwell. Little Brown and Company. 2024. Just some chapters. (Amazon: Hardcover \$15.29)



Top: (left) Rabbi Suzie Jacobson, Priscilla Golding and Barbara Koff; (right) Beatles Study Group - Spring Semester; Bottom: Jews for Blues performs for TILLI

See Study Group Leader biographies on pages 11-12.

Afternoon Study Groups

► "JAMES," the imaginative and award-winning retelling of Huckleberry Finn

Bennett Simon (1933bsimon@gmail.com) and Robbie Apfel (apfelroberta@gmail.com)

This study group examines Percival Everett's 2024 novel, *James*, National Book Award winner and retelling of Mark Twain's 1884 classic *Adventures of Huckleberry Finn*. In the recent reimagining, Jim is the narrator and finally achieves his own voice, full stature, and personhood as James. The 2024 novel relies heavily on different voices and dialects illustrating the different cultures and conversational hierarchies of the antebellum period. Accordingly, the study group will spend class time taking roles and reading aloud selected passages as a basis for our discussion of the narrated story. We will help study group members familiarize themselves with the Twain novel, through outline and background material, even though this brilliant 2024 novel stands on its own without any prior knowledge of Huck Finn.

Reading: Reading approximately 50 pages/week from *James*. Purchase new copy of *James* by Percival Everett (Doubleday, New York, 2024) audiobook is available from Penguin Random House Audio. Additional articles will be posted on Google Classroom.

► The World of TILLI: History and Impact

Saralynn Busch (saralynn0907@gmail.com) and Rhoda Wald (rhoadawald@gmail.com)

This study group will focus on the history and significance of TILLI, the first program of its type connected with a synagogue. Participants will be coauthors in a collaborative effort to develop and produce a written document that records TILLI's history, growth, and impact on a diverse group of older adults. We will study healthy aging and its connection to life-long learning from a variety of perspectives, interview a range of people who have influenced the program, and review relevant historical materials.

Readings: All readings will be made available through Google Classroom.

"SGL is really good at facilitating discussions. She makes everyone certain their insights are valuable. Her love for Austen is contagious. I also appreciated her thorough knowledge of the subject."

— TILLI Participant

Afternoon Study Groups

► A History of Hungarian Jews from Ancient Times to the Orbán Regime

George Deák (deakgy62@gmail.com)

The course will give an overview of the history of Hungarian Jews, emphasizing their important contributions to the Hungarian economy and culture in the 19th and early 20th centuries, their attempts at assimilation, and the scapegoating and persecution that climaxed in their deportation and murder during the Holocaust. We will also examine the resurgence of Jewish identity after the fall of Communism, and the complex relationship between Hungarian Jewish groups, Israel, and Prime Minister Victor Orbán's "illiberal democracy." The course will be about 40 percent lecture, 40 percent discussion, and 20 percent film. Participants will be expected to do about two hours of preparation per week.

Reading: Kertész, Imre, (Tim Wilkerson trans.) *Fatelessness*. 2007. Kindle edition 2009. (Originally published in 1975 in Hungarian as *Sorstalanság*) Kindle price \$7.99 Additional reading materials will be posted on Google Classroom.

► All History is Local History

Ken Liss (kenlissbrookline@gmail.com)

Tip O'Neil famously said, "All politics is local." He could have said, "All history is local," too. After all, everything happened *somewhere* – and something happened everywhere. The study group leader will share six stories that begin in Brookline and that take us beyond the borders of that one town to Boston's Automobile Row, an 1872 Cape Cod shipwreck, a 1882 children's photo album, a

19th century condominium-type development on Beacon Street, a Black protest against a proposed "Mammy" monument in Washington, D.C., and two pre-Civil War readers and the books they read. Each presentation will be illustrated with photographs, maps, news articles, sketches, and contemporary accounts.

"This was the 3rd class I've taken with this SGL: I enjoy his wide-ranging knowledge and enthusiasm in sharing his interests. Having previously taught a class in Animal Intelligence at HILR, the class material and presentations were well-prepared. I loved the mix of material presented in class sessions."

— TILLI Participant

Reading: All reading will be posted on Google Classroom.

Afternoon Study Groups

► Women in Astronomy: It's Not Only a Boy's Game

Linda Neumann (linnewmann@yahoo.com)

Women astronomers have made pioneering contributions since Caroline Herschel discovered her first nebula in 1783. These include the discoveries of comets, classification and structure of stars, discovery of pulsars, existence of dark matter, and search for extraterrestrial life. Maria Mitchell, Cecelia Payne-Gasposchkin and the Harvard Computers, Vera Rubin, and others have succeeded in spite of being largely excluded

from professional astronomy when science became institutionalized in the 19th century. During the sessions, we will combine studying their lives and careers with understanding their science and its importance. No science background is required. Estimated outside work is three hours per week. Please note the last class session will be Monday, November 24, 2025 at 2:00 p.m.

"Well prepared SGLs. They used a variety of classroom strategies.

Lots of healthy discussion by engaged members. I liked the depth that was provided by the materials in the course and the different perspectives on the play that came out in the discussions.

Class participation made it. The leaders were enthusiastic."

— TILLI Participant

Readings: Dava Sobel, *The Glass Universe* (Penguin Books, 2017). Additional readings and videos will be posted on the Google Classroom.


► A View Into a Vanished World: Yiddish Short Stories

Natalie Schatz (schatz.natalie@gmail.com)

Modern Yiddish literature is dated from 1864 with the writer Mendele Mokher Sforim (Mendel the Book Seller) who is the narrator of numerous novels and short stories. The literature arose out of the secularization of Ashkenazic Jewish life in Eastern Europe. It flourished both in Europe and America until 1939 with the destruction of European Jewry. A few writers such as I.B. Singer, Chaim Grade, and S.Y. Agnon continued writing in Yiddish after World War II. In this study group, we will read stories from an anthology, edited by Irving Howe, which illuminate the life of Eastern European Jewry. The reading is about approximately 50 pages a week.


Reading: *Treasury of Yiddish Stories* by Irving Howe and Eliezer Greenberg. Revised and Updated Edition, 1990. (Many used and new copies available)

UPCOMING TILLI

 **The Light in the Piazza,**
Huntington Theater
(June 8)


JUNE 2025

S	M	T	W	Th	F	S
1	2	3	4	5	6	7
8	9	10	11	12	13	14
15	16	17	18	19	20	21
22	23	24	25	26	27	28
29	30					

 **Studios Without Walls:**
Riverway, Brookline
(July 10) (Raindate: July 11)

JULY 2025


S	M	T	W	Th	F	S
		1	2	3	4	5
6	7	8	9	10	11	12
13	14	15	16	17	18	19
20	21	22	23	24	25	26
27	28	29	30	31		

 **Tanglewood Excursion,**
Lenox, MA
(August 10)

AUGUST 2025

S	M	T	W	Th	F	S
					1	2
3	4	5	6	7	8	9
10	11	12	13	14	15	16
17	18	19	20	21	22	23
24 31	25	26	27	28	29	30

 **Fall Semester Registration**
Deadline: September 15th

 **Jewish Walking Tour of the**
North End, Boston
(September 18)


SEPTEMBER 2025

S	M	T	W	Th	F	S
	1	2	3	4	5	6
7	8	9	10	11	12	13
14	15	16	17	18	19	20
21	22	23	24	25	26	27
28	29	30				

PROGRAMS *at a glance*

OCTOBER 2025


S	M	T	W	Th	F	S
			1	2	3	4
5	6	7	8	9	10	11
12	13	14	15	16	17	18
19	20	21	22	23	24	25
26	27	28	29	30	31	

 **TILLI Fall Semester Study Group Sessions/Lunch & Learn**
October 23 & 30

Morning Study Groups: 11:00 a.m.
Afternoon Study Groups: 2:00 p.m.
Lunch and Learn: 1:00 p.m.


NOVEMBER 2025

S	M	T	W	Th	F	S
						1
2	3	4	5	6	7	8
9	10	11	12	13	14	15
16	17	18	19	20	21	22
23 30	24	25	26	27	28	29

 **TILLI Fall Semester Study Group Sessions/Lunch & Learn**
November 6, 13 & 20

DECEMBER 2025

S	M	T	W	Th	F	S
	1	2	3	4	5	6
7	8	9	10	11	12	13
14	15	16	17	18	19	20
21	22	23	24	25	26	27
28	29	30	31			

 **TILLI Fall Semester Study Group Sessions/Lunch & Learn**
December 4

Join us for

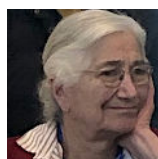
LUNCH AND LEARN

Thursday Afternoons, 1:00 - 1:45 p.m.

More info on page 13.



Study Group Leaders



Robbie Apfel and Bennett Simon ("**JAMES**", the *imaginative and award-winning retelling of **Huckleberry Finn***) are both retired psychiatrists and psychoanalysts and seasoned teachers/learners (including at TILLI) who have shared a lifelong interest in race and class in life and literature.



Saralynn Busch (***The World of TILLI: History and Impact***) is a community volunteer and avid participant in adult education programs. She previously led TILLI study groups on the experience of Jews in the American South and on *The Light in the Piazza*.



George Deák, (***A History of Hungarian Jews from Ancient Times to the Orbán Regime***) was born in Pécs, Hungary, and is an Associate of the Davis Center for Russian and Eurasian Studies at Harvard with a Ph.D. in history from Columbia University. He is a translator of Hungarian history and literature and is currently writing a study on Lajos Esztergár, the Holocaust era mayor of his native city.



Cantor Jeff Klepper (***The Many Worlds of Bob Dylan***) has been listening to (and singing) Bob Dylan's songs since 1963. Jeff is especially interested in Dylan's religious identity and spiritual life. His lecture, "Bob Dylan's Jewish Blues" has been presented widely, and he recently released an album of Jewish-themed Dylan parodies, "Like a Rolling Cohen."

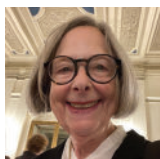


Larry Koff (***It's the Economy, Stupid***) has more than 40 years of experience in urban planning and public facilitation. He has led TILLI classes in regional planning, housing, transportation, and decision making with a focus on social and political change.



Ken Liss (***All History is Local History***) has been the volunteer president of the Brookline Historical Society since 2009. He is a retired librarian who worked at the Boston Public Library, Harvard Business School, Boston College, and Boston University.

Study Group Leaders



Peggy Morrison (*The Writer's Eye*) has a Ph.D. in English and American Literature. She is interested in the intersection of art and literature, and her dissertation was "The Connaisseur in the Novels of Henry James."



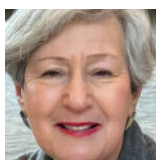
Bob McCorkle (*Rhymers from Frost to Dylan*) has taught poetry to both children and adults. This is his third TILLI literature course. He loves revisiting familiar writers and discovering new ones, and the pleasure of holding discussions with TILLI friends. He has heard Dylan play twice (from the cheap seats).



Linda Neumann (*Women in Astronomy: It's Not Only a Boy's Game*) became fascinated with the lives of women astronomers, past and present, while preparing courses on the electromagnetic spectrum and the solar system. She has a technical background in electro-optical systems.



Irwin Price (*It's the Economy, Stupid*) earned a Ph.D in Economics, after a bachelor's degree in engineering and an M.B.A. He has taught basic economics for many years at the university level and enjoyed teaching courses at TILLI in Behavioral Economics.



Natalie Schatz (*A View Into a Vanished World: Yiddish Short Stories*) spent many years as an academic librarian and a professor in library school. She has a lifelong love of literature. At TILLI she has led study groups on Israeli literature and Italian writers.



Detlev Suderow (*Out of Darkness. A Moral History of Germany: 1942-2022*) was born in Germany and graduated from Brandeis. He has had three careers, a high school counselor and psychologist, a human resource personnel in high tech and a Senior Lecturer at the International Business School at Brandeis. He spent the last 50 years of his life trying to answer the question "How could this happen in Germany?"



Rhoads Wald (*The World of TILLI: History and Impact*) has a doctorate from Columbia University and was a faculty member and administrator at Empire State College SUNY. She initiated TILLI and has participated as a study group leader and a participant. She is thrilled to see the success of the program.

LUNCH AND LEARN PROGRAM

Join us! Thursday Afternoons, 1:00 - 1:45 p.m.

RSVP: TILLI@tisrael.org for a ZOOM link

For more info about these speakers and their topics, please visit TILLI.org



OCT 23
JOAN
LEEGANT

Displaced Persons: Stories of
Israel, Exile, Belonging, and Home



NOV 13
LEAH
ROSOVSKY

Boston Atheneum:
Joy of Discovery, Power of Place



OCT 30
JEAN
TROUNSTINE

Motherlove and How Art Can
Expose the Criminal Legal System



NOV 20
ROBIN
GORENBERG

Estate Planning Basics—
Wills, Trusts and
Related Documents



NOV 6
JULIA
WILLIAMS

New (and Very Old) Acquisitions
at the Leventhal Map
& Education Center



DEC 4
CLOSING
LUNCH

Join TILLI for a
Winter and Spring Preview.

TILLI Summer Session 2025

REGISTRATION OPTIONS

www.tilli.org or contact Emma Glaser:
tilli@tisrael.org or 617-566-3960

Wonders of Creation:

Art, Science, and Innovation in the Islamic World

Thursday, May 22 at 11:00 a.m

(McMullen Museum, Boston College)

Join TILLI for a tour of The McMullen Museum of Art exhibition, *Wonders of Creation: Art, Science, and Innovation in the Islamic World*, which explores intersections of art and science in Islamic intellectual and visual culture from the ninth century to the present day. It employs the lens of “wonder” as defined by a celebrated thirteenth-century Islamic scholar Zakariyya al-Qazwini (d. 1283) in his cosmography, *The Wonders of Creation and Rarities of Existence*. Using wonder as a vehicle, *Wonders of Creation* illuminates the global impact of science and artistic production from the Islamic world and its diverse geographies and multifaceted visual cultures. Over 170 works, including illustrated manuscripts and paintings, maps, scientific instruments, magic bowls, luster dishes, architectural elements, and contemporary art, evoke wonder through a visual journey. **Cost: \$10, Lunch cost at Café Landwer not included.**



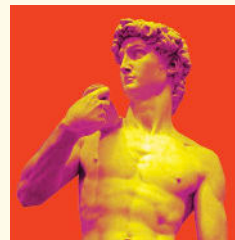
Theater Party: The Light in the Piazza

Sunday, June 8, 2:00 p.m. Matinee

There will be a talk-back.

(Huntington Theater, Boston)

Join TILLI at the Huntington Theater on Huntington Ave. to see *The Light in the Piazza*. Enjoy a summer in Italy! Witness a lush and soaring romance when artistic director Loretta Greco creates a brand new



TILLI Summer Session 2025

production of this Tony-Award-winning musical written by Craig Lucas with music and lyrics by Adam Guettel and based on the novella by Elizabeth Spencer. Protective American mother Margaret brings her daughter Clara abroad for a glimpse of Italy's romantic history. A real life attraction sparks between Clara and Florentian Fabrizio. Margaret struggles to reconcile her hopes for her daughter's future and her deep concerns about the match.

Tickets: \$30

Studios Without Walls: Dream Upon the River

Thursday, July 10, 11:00 a.m.

(Rain Date: July 11)

(Riverway, Brookline near the Longwood Stop)



Join TILLI to walk on the Riverway to view the annual *Studio Without Walls*. We will meet on the Riverway near the Longwood T stop on Chapel Street. *Studios Without Walls* has chosen 17 site specific sculptures in a remarkable variety of mediums, with a range of messages about equality, the environment, & social action. Incorporated is work by disabled artists from Gateway and Boston Green Academy. Each piece has a statement with a QR code to explore more about each artist. The 26th annual exhibition is again free to all. The art treasure hunt provides rhyming clues for each piece. Led by an artist/docent, the exhibit features sixteen sculptures by 20+ artists. After the walk, we will meet back at Temple Israel for a bag lunch. Tour is approx. 1 hour and 40 minutes. **Cost: \$10 for tour, \$15 for bag lunch at Temple Israel following the tour.**

TILLI Excursion to Tanglewood:

Yo-Yo Ma, *Pépin*, *Saint-Saëns*, and *Mendelssohn*

Sunday, August 10

(Tanglewood, Lenox MA)

Join TILLI for a special summer excursion to Tanglewood, the summer home of the Boston Symphony Orchestra.



TILLI Summer Session 2025

Participants will depart from Temple Israel by bus at 10:00 a.m. and travel to the Berkshires. Upon arrival, we will enjoy a boxed lunch before attending the afternoon performance: Yo-Yo Ma, *Pépin*, *Saint-Saëns*, and *Mendelssohn*, featuring the incomparable cellist Yo-Yo Ma. Following the performance, the group will gather for dinner at a local restaurant.

Cost: \$75, which includes round-trip transportation and a ticket to the performance. Cost of lunch and dinner is not included in the ticket price.

Jewish Historical Walking Tour of the North End

Thursday September 18, at 11:00 a.m.

It's easy to look at today's North End in Boston, with its many Italian restaurants, and assume there was never a Jewish presence. In fact, during America's 3rd Wave of Immigration, 1880-1920, the North End served as the center of Boston's growing Jewish population. There has been a historical Jewish presence in the North End going back to the 1700s. In this 90-minute tour, we will examine the buildings, some extant and some not, along with aspects of everyday Jewish life, and potential points to connect with your ancestors. If your family is from Boston, bring your stories, and perhaps we can see how they fit in with the Jewish community's unique history in Boston. The walk is about a 1/2 mile. Those interested can join the group at a restaurant for lunch following the tour (not included in program cost).

Tour cost is \$10 per person.



REGISTRATION OPTIONS

www.tilli.org or contact Emma Glaser:

tilli@tisrael.org or 617-566-3960

Core Committee

TILLI Co-Chairs: Priscilla Golding, Barbara Koff

Adult Education Liaison: Saralynn Busch

Archivist & Caring Community: Abby Greenberg

Budget: Ted Greenwood

Curriculum Committee: Natalie Schatz, Chair

Events Committee: Yetta Katz, Debra Mandel, Co-Chairs

Photographer: Debra Mandel

Lunch and Learn Committee: Bob McCorkle, Chair

Membership and Hospitality Committee: Mark Kaplan, Beth Sands, Co-Chairs

Special Events Coordinator: Serena Fujita

Winter/Summer Program Committee: Deborah Seidel

Clergy Liaison: Rabbi Suzie Jacobson

Adult Education TILLI Staff:

Lily Van Cleave and Emma Glaser

Brochure Design: April Ropes

Summer/Fall Session Acknowledgements

from the Co-Chairs, Barbara Smith Koff and Priscilla Golding

- To the Events Committee: Debra Mandel, Yetta Katz Co-Chairs, Amy Michaels, Glenda Fishman, Jackie Anapolle, Debi Gandre
- To the Program Committee: Deborah Seidel, Lenore Miller, Carol Agate, Ruth Klepper, Larry Koff
- To the Curriculum Committee: Natalie Schatz, Chair, Judy Berkowitz, Serena Fujita, Judy Herman, Helen Kolsky, Peggy Morrison, Ted Greenwood

PLEASE REGISTER ONLINE AT www.TILLI.org

REGISTER EARLY.

MANY CLASSES HAVE LIMITED ENROLLMENT.

PLEASE INDICATE FIRST AND SECOND CHOICE
WHEN REGISTERING.

REGISTER BY SEPTEMBER 15, 2025

Registration is online only at www.TILLI.org, with no mail in registration. You will still have the option to pay by check or credit card when registering online. You may also register by phone by calling 617-566-3960 and asking for a TILLI staff person.

FEES

\$120.00 (members of a temple)

\$150.00 (community members unaffiliated with a temple)

Contact TILLI staff at tilli@tisrael.org or
call 617-566-3960 for questions/support.

Scholarships are available on request.

Fees can be paid by credit card online or by check.

Make checks payable to Temple Israel and mail to:

TILLI-Temple Israel, 477 Longwood Avenue, Boston, MA 02215



Temple
Israel
Lifelong
Learning
Institute

Non-Profit
Organization
US Postage
PAID
Permit No. 50648
Boston, MA