

TILLI

TEMPLE ISRAEL LIFELONG LEARNING INSTITUTE



Summer/Fall 2023

Learn with us online or onsite!

Welcome to the summer and fall 2023 seasons of
Temple Israel Lifelong Learning Institute (TILLI)!



This summer we will again visit museums both online and onsite (in person) as well as our annual local outdoor art display and a national historic site in Brookline.

This fall following the high holidays, we have TEN wonderful study groups, both onsite and mixed presence (Zoom and onsite). Registration will be **only online** at www.tisrael.org/TILLI-Fall2023 with **no mail in registration**. Cost for the study groups (\$75 for temple members and \$100 for non-temple members) can be paid by credit card online or by check sent to the Temple **after online** registration. The fee includes both continental breakfast and lunch meals served in Levi Auditorium. Some study groups are limited in size. Please add a second choice so we can ensure you will have place in a study group. Also during the fall session, we will hear from five interesting speakers at our Lunch and Learn program. All of the speakers may be heard in person or on Zoom.

TILLI is a peer-led community and we welcome the involvement of all of you, both as participants and leaders. If you have a specific interest to pursue as a study group, please speak to a curriculum committee member about developing it. The committee offers study group coaching and assistance. The Gale Raphael TILLI Fund supports the important work of TILLI. Please consider making a donation in honor of a friend or family member or for your own life lifecycle celebrations. We look forward to seeing our returning friends and hope to meet many new ones.

See you this summer,
Barbara Koff and Priscilla Golding
TILLI Co-Chairs

TILLI FALL 2023 SCHEDULE

THURSDAYS: October 12, 19, 26, November 2, 9, 16

11:00 a.m. - 12:30 p.m.

12:30 p.m. - 1:45 p.m.

2:00 p.m. - 3:30 p.m.

Morning Study Groups

Lunch and Learn Program

Afternoon Study Groups

MORNING STUDY GROUPS

11:00 a.m. - 12:30 p.m.

The Algonquin Round Table - Ron Ebert (ONSITE and ONLINE)

Three “B’s” in the Romantic Century - Paula Folkman (ONSITE ONLY)

Six Contemporary Poets - Robert McCorkle (ONSITE and ONLINE)

Energy: from the Beginning to the Future - Irwin Price (ONSITE and ONLINE)

Shakespeare Plays with Gender - Bennett Simon (ONSITE ONLY)

AFTERNOON STUDY GROUPS

2:00 p.m. - 3:30 p.m.

Writing from the Heart - Roberta Apfel (ONSITE ONLY)

Reading August Wilson - Judy Berkowitz, Lenore Miller, & Sandy Wixted (ONSITE ONLY)

Meet Your Microbiome - Barbara Brodsky (ONSITE ONLY)

Vienna Revealed - Peggy Morrison (ONSITE ONLY)

Mr. Mani: Yeshoshua’s Masterwork - Natalie Schatz (ONSITE and ONLINE)

Register at TILLI.org Deadline: October 3rd

If you have any questions regarding TILLI, please contact Ann Abrams
at TILLI@tisrael.org, 617-566-3960.

Temple Israel’s Lifelong Learning Institute (TILLI) provides opportunities for Temple members and others to engage in peer-led, intellectually stimulating study groups covering a broad range of topics, to enjoy cultural events together, and to develop social relationships and a community.

Morning Study Groups

► The Algonquin Round Table

Ron Ebert (rebertpsi@yahoo.com)

“SGL* was a wonderful and very knowledgeable. Subject matter was very interesting. Well done. Reading was good. SGL was well prepared.”

— TILLI Participant

A group of New York writers, wits, and playwrights gathered daily at the Algonquin Hotel for almost ten years following the end of World War I. They were initially impoverished and unknown, but quickly became famous

and successful, entertaining each other with barbs, stories, and antics, while fascinating New York and America through newspapers and magazines. Members included Dorothy Parker, Robert Benchley, Harold Ross, Robert Sherwood, Edna Ferber, George S. Kaufman, Alexander Woollcott, and even Harpo Marx. They reviewed books and plays and wrote articles, plays, books, and poetry. Some eventually went to Hollywood to write films. We will read and discuss their stories, criticisms, and poems, and watch some of their plays and films (at home and in class). And we will laugh. Estimated outside work is three hours per week.

Class size is limited to 20.

Readings: Nat Benchley and Fitzpatrick, Kevin C., Eds, *The Lost Algonquin Round Table*, IUniverse, Inc., 2009 (\$12.21 hardcover).

Parker, Dorothy, *The Portable Dorothy Parker*, Second Revised Edition, Ed. Marion Meade, Penguin Classics, 2006 (\$13.99 paper).

► Three “B’s” in the Romantic Century

Paula Folkman (pepfolk@comcast.net)

The immortal composers Beethoven, Berlioz, and Brahms were most active in the beginning, middle, and end of the 19th century. We will consider their innovations and contributions to the History of Music—especially symphonic music—in this exciting and Romantic century. This is a mostly listening course, and the study group leader will distribute any necessary written material. **Class size is limited to 20**



Above: From TILLI Spring Semester, 2023

*SGL=“Study Group Leader” throughout brochure

Morning Study Groups

► Six Contemporary Poets

Bob McCorkle (mccorkle49@yahoo.com)

We will read poems by Billy Collins, Elizabeth Bishop, Mary Oliver, Donald Hall, Gwendolyn Brooks, and Linda Pastan, poets all widely admired. Each class will focus on one poet--some biographical information, a look at videos of interviews or readings when possible, some oral reading, but the bulk of the time will be given to discussion. Sharing ideas about the work can make a richer experience for us all. There will be poems to read for each class, under an hour's work. These are accessible poems—clear enough to make sense of on the first reading, but with enough depth to reward a closer look.

Readings: The readings for each class will be available online.

► Energy: from the Beginning to the Future

Irwin Price (Irwin.Price@gmail.com)

Our universe was created from energy, resulting in multiple forms of energy, such as electricity. Our planet functions using energy which is defined as the ability to do work. We will look at several sources of energy, such as carbon

fuel, nuclear, and some of the "renewables," considering the benefits and costs of each. We will speculate on how different sources of energy might be harnessed to allow continued advancement of civilization with less harm to the planet. The class will be mostly presentations, with discussions of present and future options for society. Reading sections of the text each week prior to class will enhance both understanding and discussions. **Class size is limited to 15.**

"Book was informative and understandable; SGL presented excellent classes that expanded on the reading. The subject matter was fascinating."

— TILLI Participant

Readings: Vaclav Smil. *Energy. A Beginner's Guide* (Beginner's Guide) Oneworld publications, 2017. \$14.99 Used as low as \$9.37

See Study Group Leader biographies on pages 11-12.

Morning Study Groups

► Shakespeare Plays with Gender: **As You Like It and Twelfth Night, Comedies of Love** *Bennett Simon (Bennett_Simon@hms.harvard.edu)*

We will be reading two of Shakespeare's popular love comedies, *As You Like It* and *Twelfth Night*, that "play" with confusions of gender, featuring women dressed as men. We will read portions of the plays aloud in the study group as the stimulus for discussion of the plays. Selections of films will be used. About two hours a week needed for preparation, reading the plays, and selected commentaries. **Class size is limited to 8.**

Readings: Folger editions of *As You Like It* and of *Twelfth Night*, with the text of the play on the right-hand page and notes on the text on the left. Cost online is about ten dollars per volume.



Above: Scenes from TILLI Spring Semester, 2023

Afternoon Study Groups

▶ Writing from the Heart

Robbie Apfel (apfelroberta@gmail.com)

This course will provide participants with an opportunity to write in prose or poetry about their lives.

Writing will take place in class and then be read aloud/shared, for those who so wish, with the group. This may start the flow of memories and words/images.

Between classes, some may want to edit or expand a story begun in class or create a file on their computers to store their writing for later development. Although no outside reading or writing will be assigned, study group members may want to prepare by reflecting upon what they might like to write and for whom. Participants may discuss a favorite memoir that has inspired them and given them goals for writing about their own lives. They should bring a notebook and their favorite writing implement to all classes. **Class size is limited to 8.**

“SGL was very well-prepared; kept to schedule each week; invited class discussion, questions; had good knowledge of subject matter; interesting subject matter.”

— TILLI Participant

▶ Reading August Wilson: Continuing the Cycle

Judy Berkowitz (berkowitz.judy@gmail.com), Lenore Daniels Miller (ldmiller@successfultspeech.com), Sandra Wixted (sandra.wixted@gmail.com)

Inspired by last year's TILLI session of August Wilson's plays, this fall we will read *Joe Turner's Come and Gone* and *Two Trains Running* — part of Wilson's ten play cycle exploring the African-American experience during the twentieth century. The sessions will center on Wilson's recurring themes, use of language, and character development through shared oral script reading and discussion. Preparation includes one and one half hour of script reading per week. **Class limited to 10.**

Readings: August Wilson: *Joe Turner's Come and Gone* and *Two Trains Running*. Please use the edition by the publisher, Plume. Price Online: Ranges from \$13.99 new to \$6.99 used. Plays are available in local libraries.

Afternoon Study Groups

► Meet Your Microbiome

Barbara Brodsky (Barbara.Brodsky@tufts.edu)

It turns out that we humans are not simply just human. Each person is an ecosystem with more than one trillion microscopic organisms living in and on us at any given time. This collection of bacteria, viruses and fungi co-existing with us is known as our microbiome. In this class, we will look at recent discoveries about the function of these microorganisms that share our bodies and their wide influence on many aspects of our physical and mental health. The class format will include lectures and discussion, with 1-2 hours of reading assigned each week. **Class size limited to 14.**

Readings: Justin Sonnenburg and Erica Sonnenburg. *The Good Gut: Taking Control of Your Weight, Your Mood, and Your Health*. Penguin Book, 2015, (\$15.99 for paperback on Amazon)



Above: Scenes from TILLI Spring Semester, 2023

Afternoon Study Groups

▶ Vienna Revealed

Peggy Morrison (prmorrisson@verizon.net)

The Max Liebermann novels by Frank Tallis focus on political, social, and cultural issues in turn of the century Vienna from the perspective of an early disciple of Sigmund Freud. These novels are set in the milieu depicted in Tom Stoppard's play, *Leopoldstadt*, and of the von Ephrussi in *The Hare with Amber Eyes* and inspired the PBS series, *Vienna Blood*. Through lecture and discussion, we will explore fin-de-siècle Viennese art, music, culture, food, fashion, politics, and anti-semitism through Dr. Liebermann's experiences. Study group participants should plan on two hours per week of reading.

"SGL was well prepared and had first hand knowledge of the topic. The videos were interesting."

— TILLI Participant

Readings: Frank Tallis, *Vienna Secrets*. \$16.99 (new) Amazon

Frank Tallis, *Death and the Maiden*. \$17.04 (new) Amazon

The books are also available used and in Kindle format.

Additional reading supplied by the instructor.

▶ Mr. Mani: Yeshoshua's Masterwork

Natalie Schatz (schatz.natalie@gmail.com)

"The SGL was an excellent facilitator for discussions. She knew the subject matter and made the class very interesting."

— TILLI Participant


A.B. Yehoshua has been called "the Israeli Faulkner" and his novel *Mr. Mani* (1992) is widely regarded as his masterwork. The winner of the first Israeli Literature Prize and a New York Times Notable Book, it is

a deeply affecting family saga that intersects with Jewish history. In a series of one-sided conversations beginning in 1982 and going back in time 200 years, the author represents the fate of the Jewish people in their epic struggle for identity. In the study group, we will discuss each chapter and the deep meaning that is contained in it. **Class size is limited to 20.**

Reading: A.B. Yehoshua, *Mr. Mani*. Copies are available from online booksellers (around \$14.) and in libraries.

UPCOMING TILLI

JUNE 2023

 The Grandparents Scam - **June 15**
(11:00 a.m.)


S	M	T	W	Th	F	S
				1	2	3
4	5	6	7	8	9	10
11	12	13	14	15	16	17
18	19	20	21	22	23	24
25	26	27	28	29	30	

JULY 2023

The Sum of the Parts at Studio
Without Walls - **July 20** (11:00 a.m.)
(raindate: 7/27)

S	M	T	W	Th	F	S
						1
2	3	4	5	6	7	8
9	10	11	12		14	15
16	17	18	19		21	22
23 24	24 30	25 31	26		28	29


AUGUST 2023

 The Sassoons: The Jewish Museum, NY
August 3 (11:00 a.m.)

 Frederick Law Olmsted House and
Gardens - **August 17** (11:00 a.m.)

S	M	T	W	Th	F	S
		1	2	3	4	5
6	7	8	9	10	11	12
13	14	15	16	17	18	19
20	21	22	23	24	25	26
27	28	29	30	31		

SEPTEMBER 2023

 DeCordova Sculpture Park and Museum
- **September 7** (11:00 a.m.)

S	M	T	W	Th	F	S
					1	2
3	4	5	6	7	8	9
10	11	12	13	14	15	16
17	18	19	20	21	22	23
24	25	26	27	28	29	30

PROGRAMS *at a glance*

OCTOBER 2023

S	M	T	W	Th	F	S
1	2	★ 3	4	5	6	7
8	9	10	11	12	13	14
15	16	17	18	19	20	21
22	23	24	25	26	27	28
29	30	31				

★ TILLI Fall Semester Registration
Deadline - **October 3**

■ Fall Semester Study Group
Sessions/Lunch & Learn
October 12, 19 & 26

NOVEMBER 2023

S	M	T	W	Th	F	S
			1	2	3	4
5	6	7	8	9	10	11
12	13	14	15	16	17	18
19	20	21	22	23	24	25
26	27	28	29	30		

■ Fall Semester Study Group
Sessions/Lunch & Learn
November 2, 9 & 16

Morning Study Groups: 11:00 a.m.
Afternoon Study Groups: 2:00 p.m.
Lunch and Learn: 1:00 p.m.

DECEMBER 2023

S	M	T	W	Th	F	S
					1	2
3	4	5	6	7	8	9
10	11	12	13	14	15	16
17	18	19	20	21	22	23
24 31	25	26	27	28	29	30

■ Chanukah Party
December 14



Join us for

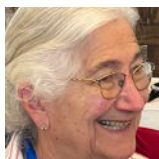
LUNCH AND LEARN

**Thursday Afternoons,
1:00 - 1:45 p.m.**

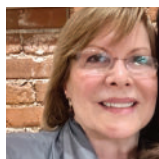
More info on pages 15-16.

**See pages 13-14 for
Summer Programming info.**

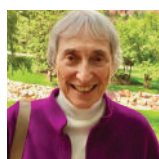
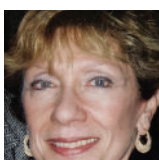
Study Group Leaders



Robbie Apfel (*Writing from the Heart*) practiced psychiatry and psychoanalysis and was on the faculty at Harvard Medical School. She is also a life-long writer. She knows the value of writing, especially when done freely, spontaneously and by hand, and has found that writing in a safe, confidential (non-therapy, non-judgmental) workshop is a good way to remember and memorialize feelings and experiences.



Judy Berkowitz, Lenore Daniels Miller and Sandra Wixted (*Reading August Wilson*) The facilitators have a combined interest in and love of theater and explicitly in the creative genius and passion of August Wilson. As a former member of Actors' Equity, Lenore knows how powerful it is to read the plays aloud. Judy, an active TILLI leader, taught for many years in the Boston public schools and has a degree in Art Therapy. Sandy has acted in Shakespeare plays, majored in English and attended about 30 local theater productions a year.



Barbara Brodsky (*Meet Your Microbiome*) did research on protein structure and taught medical students in the Department of Biochemistry at Rutgers Medical School. She is fascinated by the recent findings on the microbiome and looks forward to sharing them with you.



Ronald (Ron) Ebert (*The Algonquin Round Table*) is a retired Forensic Psychologist and long-term Temple Israel member born too late to sit in on the table, but he recalls watching Benchley shorts at the movies and cannot wait to share them, together with Dorothy Parker's sharp quips and The Marx brothers movies, as well.

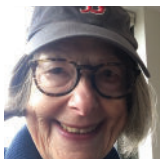


Paula Folkman (*Three B's and the Romantic Century*) holds a B.A. and M.A.T. in music theory, history and education. She has been pianist, choral singer, teacher, editor, accompanist, choir director and coach.

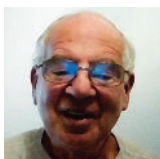
Study Group Leaders



Bob McCorkle (*Six Contemporary Poets*) has taught poetry to both children and adults. Putting this course together gave him a chance to revisit old favorites and discover voices new to him. We often encounter poems as part of an anthology, or even standing alone on the page without context. This project grew from a curiosity about how a poem fits into a lifetime of work and connects to the person living that life.



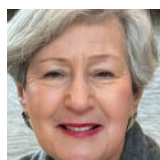
Peggy Morrison (*Vienna Revealed*) has a PhD in English and American Literature and has taught at the secondary and college levels. She is interested in the development of modernism in art, literature, and music. Among the many TILLI study groups she has led are *The Hare with Amber Eyes*, *Vienna 1900*, and *Letters to Camondo*.



Irwin Price (*Energy: from the Beginning to the Future*) earned a Ph.D. in Economics, after a bachelor's degree in engineering and an MBA. He has taught basic economics for many years at the university level and enjoyed teaching a course at TILLI in Behavioral Economics. His introductory sessions will set the framework for a discussion of the choices we make.



Bennett Simon (*Shakespeare Plays with Gender: As You Like It and Twelfth Night, Comedies of Love*) is a retired psychiatrist and psychoanalyst with a lifelong interest in drama, especially Greek tragedy and Shakespeare. At Harvard, he taught "Tragic Drama and Human Conflict" for some twenty years. He is also a consumer and provider of good jokes.



Natalie Schatz (*Mr. Mani: Yeshoshua's Masterwork*) received a B.A. in history and political science from Hunter College, an M.A. from Harvard University in Soviet Union studies and an M.L.S. from Simmons College. She worked in both academic and public libraries. She was an adjunct lecturer in Library Science at the University of Rhode Island and Simmons College. She has led TILLI study groups on Israeli literature and Israeli film.

Need help obtaining a physical or e-book for your study group, to borrow or buy?
Please contact Ann Abrams, who still wears the TI Librarian hat!
(aabrams@tisrael.org)

TILLI SUMMER SESSION 2023



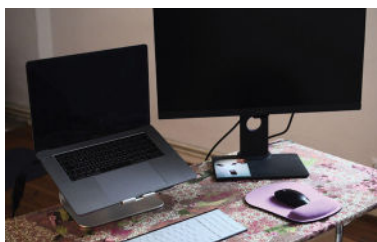
All events are free and are from 11:00 a.m. – 12:30 p.m.

Register at www.TILLI.org

JUNE 15, 11:00 a.m. (ONSITE AT TI)

The Grandparents Scam

Join us to learn some of the best ways you can avoid becoming the victim of phone, email and internet scams. A Boston FBI white collar crimes supervisor will be giving a presentation about telephone, internet and email scams to TILLI.



JULY 20, 11:00 a.m. (ONSITE)

The Sum of the Parts at Studio Without Walls, an art walk along the Muddy River at Riverway Park, Brookline

Rain Date: July 27th. After the Art

Walk, return to Temple Israel for a bag lunch. Cost: \$15 for bag lunch.

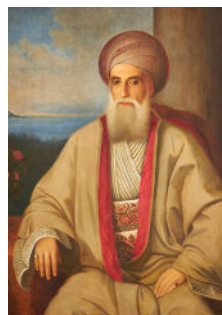
Led by an artist/docent the exhibit features sixteen sculptures by 20+ artists. (Meet on the Riverway near the Longwood T stop on Chapel Street).

AUGUST 3, 11:00 a.m. (ONLINE ON ZOOM)

The Sassoons: The Jewish Museum, NY

Led by docent

The Jewish Museum will present *The Sassoons*, an exhibition that reveals the fascinating story of a remarkable Jewish family, highlighting their pioneering role in trade, art collecting, architectural patronage, and civic engagement from the early 19th century through World War II. The exhibition will follow four generations from Iraq to India, China, and England, featuring a rich selection of works collected by family members over time.



TILLI SUMMER SESSION 2023



AUGUST 17, 11:00 a.m. (ONSITE)

Frederick Law Olmsted House and Gardens 99 Warren St. Brookline

Led by Park Ranger

Frederick Law Olmsted (1822-1903) is recognized as the founder of American landscape architecture. In 1883, after supervising the design and construction of such landmarks as Central Park and the US Capitol Grounds, Olmsted moved his family from New York City to 99 Warren Street in Brookline, Massachusetts. It was here that he also re-established his office. “Fairsted,” as he called it, served as both a home and the world’s first full-scale professional practice of landscape architecture. The National Park Service acquired Olmsted’s home and office in 1979 and maintains many of the working records in the interest of understanding and preserving the special places this firm created.



SEPTEMBER 7, 11:00 a.m. (ONSITE)

DeCordova Sculpture Park and Museum 51 Sandy Pool Rd. Lincoln, MA

Docent directed tour



DeCordova Sculpture Park and Museum is the largest park of its kind in New England. It provides a constantly changing landscape of large-scale, outdoor, modern and contemporary sculpture and site-specific installations of more than 60 works. We will

carpool to the Museum, tour with a docent, and eat lunch together in a nearby restaurant in Waltham.

Summer Session Acknowledgments

Co-Chairs Priscilla Golding and Barbara Smith Koff
Summer and Winter Programs Coordinator: Natalie Schatz
Events and Entertainment: Susan Fliegel, Debi Gandre, Joan Lauren

LUNCH AND LEARN PROGRAM

Join us! **Thursday Afternoons, 1:00 - 1:45 p.m.**

RSVP: TILLI@tisrael.org for a ZOOM link

For more info about these speakers and their topics, please visit TILLI.org



OCTOBER 12

RACHEL CANAR

*Israel's Largest Environmental Organization—
Updates from the Field*

Rachel is the Executive Director of the American Society for the Protection of Nature in Israel (ASPNI). They support the Israeli organization SPNI, which is the largest and oldest environmental organization in Israel.

OCTOBER 19

FRANCES MALINO

Mazaltob: A Jewish Novel



Fran Malino is a retired history professor from Wellesley College. She recently translated this novel, which was written by an Algerian Jewish woman, which won a prestigious award in 1931.



OCTOBER 26

DAVID ABROMOWITZ

*Encountering Our Ancestors
through Fiction*

David wrote *The Foxtail Legacy*, a novel with a Jewish immigration theme. He spoke recently at the temple library.

LUNCH AND LEARN PROGRAM

Join us!

Thursday Afternoons, 1:00 - 1:45 p.m.

RSVP: TILLI@tisrael.org for a ZOOM link

For more info about these speakers and their topics, please visit TILLI.org



NOVEMBER 2

PRISCILLA GOLDING

*The Genius of
Frederick Law Olmsted*

Priscilla is a volunteer at the Frederick Law Olmsted
National Historic Site.

NOVEMBER 9

CHRISTOPHER GORHAM

*How Anna Rosenberg Helped Win WWII
and Shape Modern America*



Christopher is the author of *The Confidant*, a biography of
Anna Rosenberg. Rosenberg was a close advisor to FDR.



NOVEMBER 16

CLOSING LUNCH

*Join TILLI for a
Winter/Spring Preview*



Core Committee

Barbara Koff and Priscilla Golding, Co-Chairs

Archivist and Caring Community: Abby Greenberg, Chair

Budget, Data, Tech Assistance and Elections: Ted Greenwood, Chair

Curriculum: Judy Herman and Natalie Schatz, Co-Chairs

Entertainment and Events: Susan Fliegal, Debi Gandre, Joan Loren, Co-Chairs

Special Events: Serena Fujita, Chair

Lunch and Learn: Bob McCorkle, Chair

Membership: Beth Sands and Mark Kaplan, Co-Chairs

Adult Education Liaison: Saralynn Busch, Chair

Summer and Winter Programming: Lenny Krulewich, John Freeman, Co-Chairs

Public Relations and Photography: Debra Mandel, Coordinator

Clergy Liaison: Rabbi Suzie Jacobson

Adult Education Team:

Brigid Goggin, McKenzie Johnson and Ann Abrams (TILLI Coordinator)

Brochure design: April Ropes

PLEASE REGISTER ONLINE AT www.tisrael.org/TILLI-Fall2023

REGISTER EARLY.

MANY CLASSES HAVE LIMITED ENROLLMENT.

PLEASE INDICATE FIRST AND SECOND CHOICE
WHEN REGISTERING.

REGISTER BY OCTOBER 3, 2023

Registration is online only at www.tisrael.org/TILLI-Fall2023, with no mail in registration. You will still have the option to pay by check when registering online. You may also register by phone by calling 617-566-3960 and asking for a TILLI staff person.

FEES

\$75.00 (members in good standing at Temple Israel)

\$100.00 (community members unaffiliated with a synagogue)

Contact TILLI staff at tilli@tisrael.org or
call 617-566-3960 for questions/support.

Fees can be paid by credit card online or by check.

Make checks payable to Temple Israel and mail to:

TILLI-Temple Israel, 477 Longwood Avenue, Boston, MA 02215



Temple
Israel
Lifelong
Learning
Institute

*Living Judaism through discovery,
dynamic spirituality, and righteous impact.*

Non-Profit
Organization
US Postage
PAID
Permit No. 50648
Boston, MA