

# WE WISH YOU A HAPPY AND SWEET NEW YEAR!

## L'Shanah Tovah U'metukah

## לשנה טובה ומתוקה

### ROSH HASHANAH 5786



Rabbi Elaine S. Zecher  
Cantor Alicia Stillman  
Rabbi Suzie Jacobson  
Rabbi Dan Slipakoff  
Rabbi Andrew Oberstein

Dan Deutsch,  
*Executive Director*

Shawn Kravetz,  
*Board President*

Amy Bolotin,  
*FJEC Preschool Director*

Rabbi Ronne Friedman,  
*Rabbi Emeritus*

Rabbi Bernard H. Mehlman,  
*Senior Scholar*

Cantor Roy B. Einhorn,  
*Cantor Emeritus*

## Welcome to a new year, full of possibility!

As we come together, we open our hearts to reflection, connection, and renewal. **Where are you now? Where are you going?** These powerful questions guide us into the year ahead with curiosity, courage, and hope. Together, as a community at Temple Israel of Boston, embrace the journey of becoming: grounded in tradition, lifted by spirit, and inspired by one another. May this season awaken us to joy, purpose, and the sacred potential of every step forward.



## DON'T MISS IT!

**Grand Homecoming Schmoose**  
**TONIGHT! Immediately following our Erev Rosh Hashanah community-wide service.**

Come schmooze with friends both new and old as we ring in the new year! Together, we'll celebrate the start of 5786 with fabulous food, delectable drinks, and, most importantly, the warmth of community.

ROSH HASHANAH 5786 SERVICES

*\*Indicates Rabbi Delivering Sermon*

EREV ROSH HASHANAH | 1 TISHREI 5786 / SEPTEMBER 22, 2025

**Young Family Service (Age 0 - Grade 1)**  
**5:30 p.m. | Sanctuary**  
**Rabbi:** Elaine Zecher\*  
**Cantor:** Alicia Stillman  
**Greetings:** Rachel Wexler

**Riverway Project Service (20s & 30s)**  
**6:15 p.m. | Social Hall and Online**  
**Rabbi:** Andrew Oberstein\*  
**Musicians:** Yale Friend, Dor Herskovits, Sam Powers, Ethan Roubenoff, Ellen Stepansky  
**Greetings:** Karin Freed

**Community-Wide Erev Rosh Hashanah Service**  
**7:30 p.m. | Sanctuary and Online | Followed by our Grand Homecoming Schmooze**  
**Rabbis:** Elaine Zecher\*, Suzie Jacobson, Dan Slipakoff  
**Cantor:** Alicia Stillman  
**Cantorial Soloist:** Rachmiel Klein  
**Shofar Blower:** Aviva Sapers  
**Musicians:** Plamen Karadonev, Farley Masterton, Eric Lass  
**Greetings:** Shawn Kravetz

ROSH HASHANAH | 1 TISHREI 5786 / SEPTEMBER 23, 2025

**Family Rosh Hashanah Service (Grades 2 - 7)**  
**9:00 a.m. | Levi Auditorium**  
**Rabbi:** Elaine Zecher\*  
**Cantor:** Alicia Stillman  
**Musicians:** Jeremy Faust, Eric Lass, Joshua Segal  
**Torah Chanters:** Benjamin Block, Ethan Segal, Avi Baron Fontaine  
**Greetings:** Shawn Kravetz

**Early Community-Wide Rosh Hashanah Service**  
**9:00 a.m. | Sanctuary and Online**  
**Rabbis:** Dan Slipakoff\*, Andrew Oberstein  
**Cantorial Soloist:** Rachmiel Klein  
**Shofar Blower:** Leonard Zon  
**Musicians:** Yale Friend, Dor Herskovits, Plamen Karadonev, Farley Masterton  
**Torah Chanters:** Allegra Feldman, Eliza Decaneas, Marc Miles  
**Greetings:** Rachel Wexler

**Young Family Rosh Hashanah Service (Age 0 - Grade 1)**  
**9:15 a.m. | Social Hall**  
**Rabbi:** Suzie Jacobson\*  
**Musician:** Wayne Potash

**Late Community-Wide Rosh Hashanah Service**  
**11:30 a.m. | Sanctuary and Online**  
**Rabbis:** Elaine Zecher, Suzie Jacobson, Dan Slipakoff\*, Andrew Oberstein  
**Cantor:** Alicia Stillman  
**Cantorial Soloist:** Rachmiel Klein  
**Shofar Blower:** Aviva Sapers  
**Musicians:** Yale Friend, Dor Herskovits, Plamen Karadonev, Farley Masterton  
**Torah Chanters:** Elizabeth Lyster, Joey Shapiro, Elizabeth Wright  
**Greetings:** Shawn Kravetz

TASHLICH | TUESDAY, SEPTEMBER 23, FOLLOWING MORNING SERVICES

We invite you to participate in Tashlich (“to cast away”), a beautiful ritual on Rosh Hashanah that allows us to symbolically cast our wrongdoings into the water. Immediately following both Rosh Hashanah morning services you can join us for this experience. We look forward to wishing you a *Shanah Tovah*, greeting you, and sharing this beautiful, musical experience with you.

SECOND DAY OF ROSH HASHANAH | WEDNESDAY, SEPTEMBER 24, 10:00 A.M.

Extend the joy and community worship at a second day Rosh Hashanah lay-led service. All are invited to join as we pray, study, and celebrate together. For this service, we are together in mixed presence, onsite and online. No tickets are required, and everyone is welcome. Please join us afterwards for lunch to celebrate the new year, followed by Reverse Tashlich.

REVERSE TASHLICH | WEDNESDAY, SEPTEMBER 24, 2:00 P.M.

During Tashlich we symbolically cast our transgressions into the water. At the same time, our literal waterways suffer from the pollution of human wrongdoings. Join us for a “reverse Tashlich” by helping to clean up the Muddy River and learn more about how we can care for our local waterways. Register to join us offsite. Contact jemrick@tisrael.org.



Welcome home!

Temple Israel of Boston has been a cornerstone of Jewish life since 1854, offering a spiritual home where people can connect deeply: with Judaism, with each other, and with the world around them. Temple Israel has long been a place where tradition meets innovation, where questions are welcomed, and where Jewish life is lived fully and joyfully. Across generations, it has provided meaning, comfort, and purpose to all who enter its doors.

At Temple Israel of Boston, we are living Judaism together through discovery, dynamic spirituality, and righteous impact. Our value lies in the community we create. In times of celebration and in times of struggle, it is a place to be seen, supported, and inspired. Through learning, prayer, justice work, and personal connection, Temple Israel helps individuals and families find belonging and build lives of intention and meaning. Especially during the High Holy Days, we are reminded of the sacred gift of gathering and of being part of something larger than ourselves.



Righteous Impact During the Days of Awe

TZEDAKAH ROW

Please consider a donation into one of the *tzedakah* boxes in the Atrium. This year’s partners all pursue righteous impact in areas of interest and action for our community.

La Colaborativa

La Colaborativa is a Latina-led organization that has supported Latinx immigrants in Greater Boston for over 35 years through advocacy, programs, and essential resources. As ICE raids and anti-immigrant threats intensify in Chelsea, Temple Israel is showing up in solidarity— volunteering at La Colaborativa’s food pantry and standing with our neighbors, one meal and one act of kindness at a time.

Dror Israel

Dror Israel, one of Israel’s largest grassroots educational organizations, has been a vital source of support since October 7th. Working with evacuated communities like Kibbutz Be’eri, they reestablished preschools and brought educational programs to over 41,000 people. In the face of war and trauma, Dror Israel helps children and youth regain a sense of normalcy, hope, and belonging.

Keshet

Keshet works toward a world where all LGBTQ+ Jews and their families live with full equality, justice, and dignity. By equipping Jewish communities to be truly inclusive, Keshet creates spaces where queer Jewish youth feel seen and valued, while advancing LGBTQ+ rights nationwide. At a time of growing attacks on LGBTQ+ people, especially trans youth, supporting Keshet is a vital expression of our Jewish values: justice, inclusion, and human dignity.

FOOD DRIVE DONATION

For the 27<sup>th</sup> year, Temple Israel is proud to partner with the Greater Boston Food Bank for our annual Yom Kippur Food Drive—delivering their largest single-day donation. **Paper bags will be available on Rosh Hashanah; please fill them with non-perishable food and return them on Yom Kippur, Thursday, October 2, when the Food Bank truck will be on Nessel Way.** You can also contribute year-round by bringing food whenever you visit TI, or by making a financial donation through our website.

WHAT FOOD YOU CAN DONATE TO YOUR LOCAL FOOD BANK:

Food banks accept dry and canned food donations, i.e., any food that is “shelf-stable” or nonperishable – food you can keep in your pantry and it won’t go bad. Only donate food that has not reached its “sell-by” date yet. Specifically, food banks often need items such as:

Peanut butter	Canned vegetables	Canned beans	Canned stew
Canned soup	Canned fish	Canned fruit	Salad dressings
Personal care and Household items	Marinades (if not refrigerated)	Pasta (most prefer whole grain)	Rice (most prefer brown rice)

WHAT NOT TO DONATE TO A FOOD BANK

Items needing refrigeration.

**Leftovers and Baked Goods:** *Food banks cannot accept leftovers or anything made in personal kitchens because they are not individually sealed and the food bank cannot verify the ingredients or preparation process.*

Expired food

**Food with packaging concerns:** *Damaged packaging, dented or bloated cans, packaging that is already open, or items in glass containers (which can shatter and cause food safety concerns for other food stored nearby).*



YOM KIPPUR 5786 SERVICES

	COMMUNITY-WIDE SERVICES	VILLAGE & YOUNG FAMILIES SERVICES (AGE 0 – GRADE 1)	FAMILY SERVICES (GRADES 2 – 7)	RIVERWAY PROJECT SERVICES (20s & 30s)
<b>KOL NIDRE</b> Wednesday, October 1	5:45 p.m. Community-Wide Service (Early) <i>Onsite &amp; Online</i> 8:15 p.m. Community-Wide Service (Late) <i>Onsite &amp; Online</i>	4:30 p.m. Young Family Service <i>Onsite</i>	6:00 p.m. Family Service <i>Onsite</i>	7:00 p.m. Riverway Service <i>Onsite &amp; Online</i>
<b>YOM KIPPUR MORNING</b> Thursday, October 2	9:00 a.m. Community-Wide Service (Early) <i>Onsite &amp; Online</i> 11:30 a.m. Community-Wide Service (Late) <i>Onsite &amp; Online</i>	9:15 a.m. Young Family Service <i>Onsite</i>	9:00 a.m. Family Service <i>Onsite</i>	Join together with the community-wide services at 9:00 a.m or 11:30 a.m.
<b>BETWEEN SERVICES: STAY IN THE DAY</b> Thursday, October 2	2:00 p.m. Deepen Your Yom Kippur Experience, see all your choices on page 10.	—	—	2:00 p.m. Riverway Gathering Space
<b>YOM KIPPUR AFTERNOON</b> Thursday, October 2	3:45 p.m. Torah Service, Afternoon Service, Yizkor, Neilah, Havdalah <i>Onsite &amp; Online</i>	—	—	Join together with the community-wide services at 3:45 p.m.

Deepen Your Yom Kippur Experience

Between Yom Kippur morning and afternoon services, we invite you to stay in the day and participate in a choice of facilitated conversations, or find one of many spaces inside the Temple Israel building and along the Muddy River for meditative quiet, movement, art making, and family gatherings.

- Ask the Clergy
- Hour of Action with Partakers
- Outdoor Mindfulness Walk
- Poetry as Prayer, Prayer as Poetry
- Riverway Gathering Space for 20s & 30s

Yom Kippur Break-Fast

Following Neilah and Havdalah, we will have the chance to gather for a light and delicious break-fast to share the end of Yom Kippur together!



# Our Clergy's Reflections on the Shofar



### Rabbi Elaine Zecher

I try to remember that the captivating sound the shofar makes, moves through the horn of what once was attached to a live animal. The ram's life force is part of the power of what emerges as a call to us for life and blessing. That is what reverberates in my soul.

### Cantor Alicia Stillman

For me, the shofar is a primal connection to my ancestors and family, and my colleagues, leading congregations across the globe, and to all of *Am Yisrael*, bound together in sacred memory.

### Rabbi Suzie Jacobson

The shofar's call—whole, broken, shattered into fragments, and whole once more—reminds me that each of us holds multitudes. As we enter the new year, some parts of my life are strong and flourishing, while others feel broken, in need of care. Our tradition teaches that this is the nature of being human—and that we are always capable of renewal and change.

### Rabbi Dan Slipakoff

The shofar pierces my soul in ways that words cannot. Its vibrations shake loose what is hardened within our hearts, and its calls awaken the truths we seek in this sacred season.

### Rabbi Andrew Oberstein

The shofar feels like a wake-up call, pushing me to stop, reflect, and realign with what really matters. Its raw sound links me to the generations that came before and reminds me that each year brings the chance to start fresh.

# You belong here! Find your inner circle at Temple Israel.

At Temple Israel of Boston, our vibrant community thrives on celebrating life and holidays together. We offer enriching learning and engagement opportunities that bring people closer, foster deep connections, and enhance our shared experiences. Join us to experience the warmth, joy, and dynamic spirit of our community.



### TI Circles

Looking to deepen your relationship to the Temple Israel community? TI Circles are lay-led, staff-supported small groups that foster connections based on shared passions, identities, geography, and interest. Whether you're interested in discovering new activities, learning new skills, or making new friends, there is a TI Circle waiting for you! Visit [tisrael.org/circles](https://tisrael.org/circles) to get involved today!



### Riverway Project for 20s & 30s

The Riverway Project is an inclusive, collaborative community for those in their 20s and 30s who want to connect with others grounded in Judaism, social justice, spirituality, and learning. No matter where you are on your Jewish journey, we're excited to get to know you!

# Save the Dates for These Musical Experiences!

To join our Music & Culture email list, please email Jordan Emrick at [jemrick@tisrael.org](mailto:jemrick@tisrael.org).

### Berkalit: Boston's Premier Jewish A Capella Group Sunday, October 19



We are thrilled to welcome BerKalit to Temple Israel! Founded in 2022 at Berklee College of Music, BerKalit's name is a clever nod to its origins—blending “Berklee” with the Hebrew word kalit (טילק), meaning “catchy,” which perfectly captures the group's vibrant musical style. This award-winning a cappella

ensemble, brings together members from diverse religious backgrounds, united by a deep love for Jewish music and a shared commitment to building community through song. We can't wait to experience their energy, creativity, and spirit with our community!

### Yosef Goldman & Friends December 11 - 13, 2025

In partnership with Temple Sinai and Kehillith Israel, we welcome Yosef Goldman to Boston and to Temple Israel. Yosef and his musical chevre will be here Thursday through Saturday but will specifically join us here at TI for Qabbalat Shabbat on Friday, December 12. More info coming soon.



# Center for Adult Jewish Learning

## at Temple Israel of Boston

What new things will you discover in 5786? No matter your location, schedule, experience, or interests, there are so many ways to learn with the Center for Adult Jewish Learning at Temple Israel of Boston this fall. Learn more by connecting with Lily Van Cleave at [Ivancleave@tisrael.org](mailto:Ivancleave@tisrael.org)



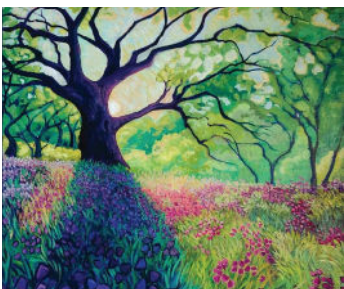
### **Jewish Music 101:** **Sounds, Settings, and Significance with Cantor Alicia Stillman** **Thursdays, October 9 & 16, 7:00 p.m. Onsite. No cost.**

Explore the evolution and significance of Jewish music, examining its role in history, culture, and religious practice. This two-session course delves into musical settings, aesthetics, and spirituality, offering participants a richer understanding of Jewish identity through music.



### **Films at TI: *Resistance: They Fought Back* with filmmaker Paula Apsell** **Sunday, October 26, 12:30 p.m. Onsite. \$5 Members/\$10 Non-Members**

Join a powerful screening of *Resistance: They Fought Back*, a documentary by Paula A. Apsell that highlights the overlooked acts of Jewish resistance during the Holocaust. The film includes survivor testimonies, expert interviews, and on-location footage across Europe and the U.S. Following the screening, Paula Apsell will lead a conversation on the film's making and its importance today.



### ***Planting Seeds of the Divine: Torah Commentaries to Cultivate Your Spiritual Practice* with Author Yiscah Smith** **Sunday, November 2, 10:30 p.m. Onsite. No cost.**

Spend a morning with Yiscah Smith exploring her book *Planting Seeds of the Divine*, which presents Torah as a spiritual garden. Each chapter offers practical exercises to cultivate personal growth and connection to the Divine. Participants will engage in reflection, learning, and discussion to deepen their spiritual practice.



### **Modern Midrash: The Transformative Experiences of Exodus** **with Rabbi Elaine Zecher** **Monthly, beginning November 13, 9:00 a.m. Online. No cost.**

In the world of Modern Midrash and through the study of the book of Exodus, we will encounter and uncover some of the lesser known stories of the impact of women. The Midrash teaches that it is “because of the women” that the Jewish people were redeemed from Egypt. But, why and how? In our monthly class, we will explore the answers and, as always, the questions.

## Commemorating October 7 at Temple Israel of Boston

### **Qabbalat Shabbat with Din Tesler, Nova Festival Survivor** **Friday, October 3, 6:00 p.m. Onsite & Online.**

Din Tesler survived the October 7 Nova Music Festival massacre, where he served as a security commander and helped save lives during the Hamas attack. His best friend, Bar Kupershtein, was taken hostage and remains in captivity. Since then, Din has shared his story across North America, raising awareness and inspiring communities with his message of resilience, remembrance, and hope.

### **October 7 Commemoration** **Monday, October 6, 6:00 - 6:30 p.m. Onsite & Online.** **Followed by our Festival Service in the Sukkah of Justice and Compassion**

As part of our Erev Sukkot gathering, we will mark the second anniversary of the October 7 attacks with a powerful moment of remembrance. As the sun sets and Sukkot begins, we will reflect together at the intersection of grief and celebration—honoring those we have lost and embracing the resilience that defines both the holiday and the human spirit. Inspired by the Israeli tradition of moving from mourning into joy, we will create sacred space to remember, to connect, and to begin the festival with purpose and hope.

## YOUTH EDUCATION AT TEMPLE ISRAEL OF BOSTON

### **THE VILLAGE: AGES 0-5**

The Village is our place for families with young children to connect, learn, and celebrate Judaism, while meeting new friends and having fun together. Throughout the year we come together to sing, pray, dance, and craft. Come experience TGIS (Thank Goodness It's Shabbat), held in our spacious outdoor garden and courtyard on the 1<sup>st</sup>, 3<sup>rd</sup>, and 5<sup>th</sup> Shabbat of the month, or take part in one of our festive Havdalah-themed events or holiday block parties! For information, contact Heidi Smith Hyde at [hhyde@tisrael.org](mailto:hhyde@tisrael.org).

### **THE FJECC PRESCHOOL: AGES 1.8-5**

The Frances Jacobson Early Childhood Center (FJECC) is committed to providing the highest quality education in both secular and Judaic studies in a safe, nurturing, and non-pressured environment under the guidance of the highest caliber teachers. Applications are accepted on a rolling basis. If you are interested in learning more about the FJECC, please contact [preschooladmin@tisrael.org](mailto:preschooladmin@tisrael.org) to schedule a tour!

### **TEMPLE ISRAEL OF BOSTON RELIGIOUS SCHOOL: AGES 3-13**

At Religious School, kids 3 years old through 7<sup>th</sup> grade can learn, grow, and find their own meaningful Jewish communities. Together, we strive to build a space where parents and children can find their places in our ancient and ever evolving tradition. Our school is joyful, kid-centered, and flexible. Interested in joining our school? Contact Roberta Axeloons at [raxeloons@tisrael.org](mailto:raxeloons@tisrael.org).

### **THE TENT: GRADES 8-12**

The Tent is a Jewish learning community for Greater Boston teens at Temple Israel of Boston. The Tent connects teens with diverse voices to strengthen them as learners, thinkers, and young American Jews. We meet on Monday nights throughout the school year with engaging classes, holiday events, and social experiences. For more information, please contact Calvin Mitchell at [cmitchell@tisrael.org](mailto:cmitchell@tisrael.org).

# Mark Your Calendar for These Special Programs

## Temple Israel at Brookline Porchfest

Saturday, September 2. Full schedule available at [BrooklinePorchfest.org](https://BrooklinePorchfest.org)

With acoustic guitar and songsheets in hand, the TI Choir will lead a lively sing-along of favorites from the 1972 album *Free To Be You and Me*. Come celebrate the timeless messages of individuality, breaking stereotypes, and dreaming big. Stop by and sing with us!

## Temple Israel of Boston and United Hatzalah present: Eden Golan Thursday, October 30

Join us for an evening with Eden Golan, who rose to international recognition as Israel's representative in the 2024 Eurovision Song Contest. Golan has inspired audiences worldwide with her voice and her resilience. Now, she comes to our community for an intimate night of music and conversation in support of United Hatzalah's lifesaving mission in Israel.

## Mindfulness Retreat with Cantor Stillman Saturday, November 1

Join us for a one-day retreat at Temple Israel to engage in a number of different mindfulness practices. Together we will spend Shabbat in an enriched mindful setting, exploring prayer, movement, eating intentionally, meditation, and text study together as practices that further our awareness of ourselves and our value in the world.

## Jewish Arts Festival & Annual Winter Concert Sunday, February 1, 3:00 p.m. Onsite at Temple Israel

**Exciting news!** This year, we are thrilled to bring together two of Temple Israel's most beloved artistic traditions for one incredible evening. Mark your calendars: the Jewish Arts Festival will return on Sunday, February 1, 2026! This year, the festival will open with Cantor Alicia Stillman's Annual Winter Concert at 3:00 p.m., and then the celebration continues at 4:00 p.m. filling our entire building with artists, vendors, food, performances, folk dancing, and more. This special night unites music, creativity, and community in a way that is truly unique. From the concert stage to the festival floor, every moment will be alive with artistry and connection. We can't wait to share this inspiring evening with you!

## Stepping Out: Temple Israel's Annual Gala Thursday, April 9, 2026

Join us for an evening of celebration and community in support of the Friends Annual Fund. Your generosity helps keep Temple Israel accessible, inclusive, and vibrant for all who call it home. Stay tuned for more details, and thank you for being part of what makes this community so special.



# Celebrate Sukkot and Simchat Torah at Temple Israel!



October 6–14, 2025

Celebrate the season with prayer, learning, food, music, and community. During Sukkot, gather in our **Sukkah of Justice and Compassion** for a special Festival Service that reflects our commitment to compassion, connection, and collective responsibility. On Simchat Torah, join our **Creative Service Experience**, where we'll unroll the entire Torah, read its closing and opening verses, and dance together in joyful celebration. All are welcome. Full schedule and details at [www.tisrael.org/5786](https://www.tisrael.org/5786).

# Accessibility & Safety Information

## ACCESSIBILITY AT TEMPLE ISRAEL

Temple Israel of Boston strives to ensure that our services are accessible and inclusive. We are proud to offer the following:

- Hearing aids can be connected to our sound system in Levi and the Sanctuary via the Listen Everywhere app.
- Large print prayer books are available for Rosh Hashanah and Yom Kippur services.
- We offer closed captioning on Youtube, Livestream, and Facebook Live, where available.
- Gender-neutral and wheelchair-accessible bathrooms are available on the first and second floors.
- Accessibility ramps are located at the Nessel Way and Riverway entrances.
- Elevator access is available to all levels, and wheelchair spaces are provided in all gathering spaces.
- ADA-compliant bathrooms are available on all floors.

Our staff at reception are available to help you navigate our offerings.

## SAFETY & EMERGENCY INFORMATION

In the unlikely case of an evacuation, please use any available exit to vacate the building. All exits are clearly marked with signage above them. If you see anything suspicious, please report it to a staff member or security guard. If you are interested in being a volunteer ambassador throughout the year, please contact Dan Deutsch, Executive Director, at [ddeutsch@tisrael.org](mailto:ddeutsch@tisrael.org).

## THANK YOU

The protective measures we have taken to provide a safe space to pray, learn, and gather come with significant financial costs. Most of our households have already contributed towards our security fund, allowing us to adapt our security measures. This contribution will be an essential resource for our ongoing safety and security work in the year ahead. Thank you! For more information, contact Dan Deutsch, Executive Director, at [ddeutsch@tisrael.org](mailto:ddeutsch@tisrael.org).

# High Holy Day Song Lyrics

## I'm Not Alone

*By Anat Hochberg & Aly Halpert*

I'm not alone, I'm not alone (repeat)  
I forgot, for a minute who I belong to  
the mama earth, the wind and rain,  
the beauty and the pain.  
I'm not alone, for me the world was created  
I'm not alone, to dust I will return.

## Hareini M'kabel Alai

*Morning liturgy*

*Hareini mekabel alai  
et mitzvah ha boreh  
v'ahavta l'rei'acha kamocha.*  
I take upon myself, the mitzvah of my creator  
*v'ahavta l'rei'acha kamocha*, to love my neighbor as  
myself

## Ashrei

*High Holy Day and Shabbat Liturgy  
Music and additional lyrics: Aly Halpert*

*Ashrei yoshvei, ashrei yoshvei beitecha  
Ashrei yoshvei beitecha, od y'halelucha, Selah*  
I sing (repeat) For you (repeat) I sing for what is holy and  
is true.  
I sing for all creation, for life and liberation Every day  
anew.

## UneTane Tokef/Who By Fire

*On Rosh Hashanah it is written, on Yom Kippur it is sealed*

And who by fire, who by water  
Who in the sunshine, who in the night time  
Who by high ordeal, who by common trial  
Who in your merry merry month of May  
Who by very slow decay  
And who shall I say is calling?  
  
And who by brave assent, who by accident  
Who in solitude, who in this mirror  
Who by his lady's command, who by his own hand  
Who in mortal chains, who in power  
And who shall I say is calling?

# Pastoral Care at Temple Israel of Boston

One of the most meaningful aspects of being part of a synagogue community is knowing that we are never alone in life's most significant moments; whether joyful or difficult.

We want to share an important update about how we support you during times of loss and mourning. **Amy Sherr**, Executive Coordinator to Rabbi Zecher and Pastoral Care, Life Cycle, and End of Life Coordinator, **will be your primary contact when you or a loved one is facing a crisis or loss.** Amy brings deep compassion, wisdom, and calm to her work. She will be your guide in navigating funeral arrangements and life's hardest moments with care and clarity. Whether you're unsure of what to do next or need to be connected with a member of our clergy, Amy will be there to help you.

You can reach Amy through the Temple Israel front desk or directly through our designated pastoral hotline:

**Pastoral Hotline: 857-305-9348**

**Temple Israel Front Desk: 617-566-3960**